

ATTENTION:

The following draft data is provided for informational purposes and general use to members of the IMO Market Pricing Working Group and their representatives. While the IMO has attempted to ensure the accuracy of the information, no warranty is expressed or implied as to the accuracy, adequacy or completeness of the draft data. Recipients of the draft data agree not to misuse or misrepresent the draft data or to use it for commercial purposes.

Date	Hour	Interval	RTU Demand	MIO:				12X Ramp:				MIO - 12x
				MCP	Price 10S	Price 10N	Price 30R	Price MCP	Price 10N	Price 10S	Price 30R	MCP
12/10/2004	18	1	20,988.70	79.95	2.57	2.57	2.57	55.31	0.32	0.32	0.32	24.64
12/10/2004	18	2	21,006.70	63.65	0.3	0.3	0.3	55.95	0.59	0.59	0.59	7.7
12/10/2004	18	3	21,071	81.54	4.16	4.16	4.16	62.83	0.59	0.59	0.59	18.71
12/10/2004	18	4	21,152.30	101.03	19.27	19.27	19.27	71.02	6.03	6.03	6.03	30.01
12/10/2004	18	5	21,275.40	114.99	30	30	30	114.99	30	30	30	0
12/10/2004	18	6	21,263	114.99	30	30	30	111.75	30	30	30	3.24
12/10/2004	18	7	21,323.70	114.99	30	30	30	114.99	30	30	30	0
12/10/2004	18	8	21,328.50	114.99	30	30	30	114.99	30	30	30	0
12/10/2004	18	9	21,106.80	111.62	29.87	29.87	29.87	67.41	4.16	4.16	4.16	44.21
12/10/2004	18	10	21,125.90	101.12	19.37	19.37	19.37	69.15	4.16	4.16	4.16	31.97
12/10/2004	18	11	21,133.70	85.58	19.27	19.27	19.27	55.82	0.59	0.59	0.59	29.76
12/10/2004	18	12	21,092.30	101.12	19.37	19.37	19.37	55.58	0.59	0.59	0.59	45.54
12/10/2004	19	1	21,096.80	113.53	28.54	28.54	28.54	83.71	18.44	18.44	18.44	29.82
12/10/2004	19	2	21,021.20	113.53	28.54	28.54	28.54	62.93	0.59	0.59	0.59	50.6
12/10/2004	19	3	20,982.40	83.71	18.44	18.44	18.44	62	0.59	0.59	0.59	21.71
12/10/2004	19	4	20,948.20	66.5	4.16	4.16	4.16	60.31	0.32	0.32	0.32	6.19
12/10/2004	19	5	20,803.80	55.51	0.3	0.3	0.3	55.07	0.3	0.3	0.3	0.44
12/10/2004	19	6	20,808.70	55.25	0.3	0.3	0.3	55.07	0.3	0.3	0.3	0.18
12/10/2004	19	7	20,757.90	54.13	0.3	0.3	0.3	54.83	0.3	0.3	0.3	-0.7
12/10/2004	19	8	20,736	54.59	0.3	0.3	0.3	54.83	0.3	0.3	0.3	-0.24
12/10/2004	19	9	20,659.80	54.13	0.3	0.3	0.3	54.55	0.3	0.3	0.3	-0.42
12/10/2004	19	10	20,664	54.83	0.3	0.3	0.3	54.59	0.3	0.3	0.3	0.24
12/10/2004	19	11	20,691.90	53.77	0.3	0.3	0.3	54.76	0.3	0.3	0.3	-0.99
12/10/2004	19	12	20,614.30	45.41	0.3	0.3	0.3	54.2	0.3	0.3	0.3	-8.79
12/10/2004	20	1	20,582.10	62.56	0.2	0.2	0.2	54.89	0.2	0.2	0.2	7.67
12/10/2004	20	2	20,597	55.17	0.2	0.2	0.2	55	0.2	0.2	0.2	0.17
12/10/2004	20	3	20,509.60	53.99	0.2	0.2	0.2	54.83	0.2	0.2	0.2	-0.84
12/10/2004	20	4	20,491.50	54.37	0.2	0.2	0.2	54.78	0.2	0.2	0.2	-0.41
12/10/2004	20	5	20,411.40	53.99	0.2	0.2	0.2	54.22	0.2	0.2	0.2	-0.23
12/10/2004	20	6	20,252.70	45.41	0.2	0.2	0.2	53.47	0.2	0.2	0.2	-8.06
12/10/2004	20	7	20,267.70	53.47	0.2	0.2	0.2	53.53	0.2	0.2	0.2	-0.06
12/10/2004	20	8	20,192.40	45.41	0.2	0.2	0.2	52.95	0.2	0.2	0.2	-7.54
12/10/2004	20	9	20,268.40	52.84	0.2	0.2	0.2	53.6	0.2	0.2	0.2	-0.76
12/10/2004	20	10	20,223.40	45.41	0.2	0.2	0.2	53.32	0.2	0.2	0.2	-7.91
12/10/2004	20	11	20,201.90	40.74	0.2	0.2	0.2	53.18	0.2	0.2	0.2	-12.44

Interval Date Dec.10,2004

12/10/2004	20	12	20,173.80	37.55	0.2	0.2	0.2	52.72	0.2	0.2	0.2	-15.17
12/10/2004	21	1	20,183.50	63.57	0.2	0.2	0.2	54.82	0.2	0.2	0.2	8.75
12/10/2004	21	2	20,124.20	54.83	0.2	0.2	0.2	54.4	0.2	0.2	0.2	0.43
12/10/2004	21	3	20,122.20	54.36	0.2	0.2	0.2	54.4	0.2	0.2	0.2	-0.04
12/10/2004	21	4	20,091.50	54.25	0.2	0.2	0.2	54.26	0.2	0.2	0.2	-0.01
12/10/2004	21	5	20,067.60	54.08	0.2	0.2	0.2	54.13	0.2	0.2	0.2	-0.05
12/10/2004	21	6	20,006.20	53.79	0.2	0.2	0.2	53.9	0.2	0.2	0.2	-0.11
12/10/2004	21	7	19,899.20	45.41	0.2	0.2	0.2	53.45	0.2	0.2	0.2	-8.04
12/10/2004	21	8	19,885.40	53.35	0.2	0.2	0.2	53.35	0.2	0.2	0.2	0
12/10/2004	21	9	19,860.30	52.87	0.2	0.2	0.2	53.21	0.2	0.2	0.2	-0.34
12/10/2004	21	10	19,859.40	45.41	0.2	0.2	0.2	53.21	0.2	0.2	0.2	-7.8
12/10/2004	21	11	19,826.70	45.41	0.2	0.2	0.2	53.45	0.2	0.2	0.2	-8.04
12/10/2004	21	12	19,789.40	40.78	0.2	0.2	0.2	53.1	0.2	0.2	0.2	-12.32
12/10/2004	22	1	19,789.40	63.57	0.2	0.2	0.2	56.62	0.2	0.2	0.2	6.95
12/10/2004	22	2	19,760.30	62.56	0.2	0.2	0.2	55.1	0.2	0.2	0.2	7.46
12/10/2004	22	3	19,691.70	54.26	0.2	0.2	0.2	54.92	0.2	0.2	0.2	-0.66
12/10/2004	22	4	19,600.10	53.79	0.2	0.2	0.2	54.71	0.2	0.2	0.2	-0.92
12/10/2004	22	5	19,435.30	40.51	0.2	0.2	0.2	53.98	0.2	0.2	0.2	-13.47
12/10/2004	22	6	19,347.20	39.75	0.2	0.2	0.2	53.56	0.2	0.2	0.2	-13.81
12/10/2004	22	7	19,284.30	54.83	0.2	0.2	0.2	53.23	0.2	0.2	0.2	1.6
12/10/2004	22	8	19,269.10	41.05	0.2	0.2	0.2	53.13	0.2	0.2	0.2	-12.08
12/10/2004	22	9	19,195.10	34.04	0.2	0.2	0.2	52.35	0.2	0.2	0.2	-18.31
12/10/2004	22	10	19,076.20	32.29	0.2	0.2	0.2	52	0.2	0.2	0.2	-19.71
12/10/2004	22	11	18,933.80	30.27	0.2	0.2	0.2	41.05	0.2	0.2	0.2	-10.78
12/10/2004	22	12	18,894.60	21.71	0.2	0.2	0.2	40.24	0.2	0.2	0.2	-18.53
12/10/2004	23	1	18,855.10	100.2	4.16	0.2	0.2	94.4	0.2	4.03	0.2	5.8
12/10/2004	23	2	18,754.50	80.19	4.16	0.2	0.2	55.25	0.2	0.2	0.2	24.94
12/10/2004	23	3	18,578.50	54.72	0.2	0.2	0.2	54.7	0.2	0.2	0.2	0.02
12/10/2004	23	4	18,480.60	40.55	0.2	0.2	0.2	53.9	0.2	0.2	0.2	-13.35
12/10/2004	23	5	18,410.20	40.82	0.2	0.2	0.2	53.67	0.2	0.2	0.2	-12.85
12/10/2004	23	6	18,199.30	31.76	0.21	0.2	0.2	52.44	0.2	0.2	0.2	-20.68
12/10/2004	23	7	18,083.30	37.17	0.2	0.2	0.2	52.1	0.2	0.2	0.2	-14.93
12/10/2004	23	8	18,022.40	53.1	0.2	0.2	0.2	40.28	0.2	0.2	0.2	12.82
12/10/2004	23	9	17,892.90	34.14	0.21	0.2	0.2	39.47	0.2	0.2	0.2	-5.33
12/10/2004	23	10	17,729	31.65	0.21	0.2	0.2	38.71	0.2	0.2	0.2	-7.06
12/10/2004	23	11	17,582.10	31.65	0.21	0.2	0.2	38.15	0.2	0.2	0.2	-6.5
12/10/2004	23	12	17,457.10	23.35	0.23	0.2	0.2	37.64	0.2	0.2	0.2	-14.29
12/10/2004	24	1	17,202.30	65.19	4.14	0.2	0.2	39.36	0.2	4.14	0.2	25.83
12/10/2004	24	2	17,091.10	38.55	4.14	0.2	0.2	38.62	0.2	4.14	0.2	-0.07
12/10/2004	24	3	16,988.90	52.48	4.14	0.2	0.2	38.33	0.2	4.14	0.2	14.15
12/10/2004	24	4	16,867	56.64	4.14	0.2	0.2	37.87	0.2	4.14	0.2	18.77
12/10/2004	24	5	16,638.90	23.35	2.98	0.2	0.2	37.19	0.2	4.14	0.2	-13.84

Interval Date Dec.10,2004

12/10/2004	24	6	16,490.60	34.04	4.14	0.2	0.2	36.99	0.2	4.14	0.2	-2.95
12/10/2004	24	7	16,440.20	37.04	4.14	0.2	0.2	36.78	0.2	4.14	0.2	0.26
12/10/2004	24	8	16,356.50	36.92	4.14	0.2	0.2	36.66	0.2	4.14	0.2	0.26
12/10/2004	24	9	16,238.90	33.94	4.14	0.2	0.2	36.41	0.2	4.14	0.2	-2.47
12/10/2004	24	10	16,054.10	30	2.98	0.2	0.2	35.91	0.2	4.14	0.2	-5.91
12/10/2004	24	11	15,982.10	30	2.33	0.2	0.2	35.65	0.2	4.14	0.2	-5.65
12/10/2004	24	12	15,779.10	30	2.98	0.2	0.2	34.9	0.2	4.14	0.2	-4.9
Average Daily				56.73285714				55.06047619				

Interval Data Dec.11,2004

ATTENTION:

The following draft data is provided for informational purposes and general use to members of the IMO Market Pricing Working Group and their representatives. While the IMO has attempted to ensure the accuracy of the information, no warranty is expressed or implied as to the accuracy, adequacy or completeness of the draft data. Recipients of the draft data agree not to misuse or misrepresent the draft data or to use it for commercial purposes.

Date	Hour	Interval	RTU Demand	MIO:				12X Ramp:				MIO - 12x
				MCP	Price 10S	Price 10N	Price 30R	Price MCP	Price 10N	Price 10S	Price 30R	MCP
12/11/2004	1	1	16,355	48.58	4.14	0.2	0.2	38.05	0.2	4.14	0.2	10.53
12/11/2004	1	2	16,148.10	37.29	4.14	0.2	0.2	37.37	0.2	4.14	0.2	-0.08
12/11/2004	1	3	16,055.70	37.25	4.14	0.2	0.2	37.22	0.2	4.14	0.2	0.03
12/11/2004	1	4	15,933.90	36.33	4.14	0.2	0.2	36.96	0.2	4.14	0.2	-0.63
12/11/2004	1	5	15,854.90	34.31	4.14	0.2	0.2	36.71	0.2	4.14	0.2	-2.4
12/11/2004	1	6	15,725.80	34.31	4.14	0.2	0.2	36.33	0.2	4.14	0.2	-2.02
12/11/2004	1	7	15,646.30	34.31	4.14	0.2	0.2	36.21	0.2	4.14	0.2	-1.9
12/11/2004	1	8	15,589.20	34.31	4.14	0.2	0.2	35.98	0.2	4.14	0.2	-1.67
12/11/2004	1	9	15,501.30	34.05	4.14	0.2	0.2	35.64	0.2	4.14	0.2	-1.59
12/11/2004	1	10	15,418.10	34.05	4.14	0.2	0.2	35.37	0.2	4.14	0.2	-1.32
12/11/2004	1	11	15,349.80	34	4.14	0.2	0.2	34.95	0.2	4.14	0.2	-0.95
12/11/2004	1	12	15,351.70	35.4	4.14	0.2	0.2	34.95	0.2	4.14	0.2	0.45
12/11/2004	2	1	15,502.10	37.02	4.14	0.2	0.2	35.95	0.2	4.14	0.2	1.07
12/11/2004	2	2	15,462	35.69	4.14	0.2	0.2	35.93	0.2	4.14	0.2	-0.24
12/11/2004	2	3	15,365.30	35.33	4.14	0.2	0.2	35.44	0.2	4.14	0.2	-0.11
12/11/2004	2	4	15,266	34.93	4.14	0.2	0.2	35.14	0.2	4.14	0.2	-0.21
12/11/2004	2	5	15,236.60	34.75	4.14	0.2	0.2	34.93	0.2	4.14	0.2	-0.18
12/11/2004	2	6	15,166.10	34.43	4.14	0.2	0.2	34.46	0.2	4.14	0.2	-0.03
12/11/2004	2	7	15,140.10	34.31	4.14	0.2	0.2	34.43	0.2	4.14	0.2	-0.12
12/11/2004	2	8	15,176.30	34.43	4.14	0.2	0.2	34.68	0.2	4.14	0.2	-0.25
12/11/2004	2	9	15,228.20	34.75	4.14	0.2	0.2	34.93	0.2	4.14	0.2	-0.18
12/11/2004	2	10	15,155	34.43	4.14	0.2	0.2	34.46	0.2	4.14	0.2	-0.03
12/11/2004	2	11	15,065	34.31	4.14	0.2	0.2	34.31	0.2	4.14	0.2	0
12/11/2004	2	12	15,035.90	34	4.14	0.2	0.2	34.18	0.2	4.14	0.2	-0.18
12/11/2004	3	1	14,981.70	34.18	4.14	0.2	0.2	34.31	0.2	4.14	0.2	-0.13
12/11/2004	3	2	14,865	33.88	4.14	0.2	0.2	34.04	0.2	4.14	0.2	-0.16
12/11/2004	3	3	14,838.70	33.92	4.14	0.2	0.2	33.92	0.2	4.14	0.2	0
12/11/2004	3	4	14,819.30	33.88	4.14	0.2	0.2	34.04	0.2	4.14	0.2	-0.16
12/11/2004	3	5	14,764	33.64	4.14	0.2	0.2	33.92	0.2	4.14	0.2	-0.28
12/11/2004	3	6	14,694.80	33.59	4.14	0.2	0.2	33.67	0.2	4.14	0.2	-0.08
12/11/2004	3	7	14,602	32.29	4.14	0.2	0.2	33.45	0.2	4.14	0.2	-1.16
12/11/2004	3	8	14,717.60	33.92	4.14	0.2	0.2	33.74	0.2	4.14	0.2	0.18
12/11/2004	3	9	14,605.70	33.3	4.14	0.2	0.2	33.45	0.2	4.14	0.2	-0.15
12/11/2004	3	10	14,576.90	33.3	4.14	0.2	0.2	33.3	0.2	4.14	0.2	0
12/11/2004	3	11	14,632.30	33.52	4.14	0.2	0.2	33.56	0.2	4.14	0.2	-0.04

Interval Data Dec.11,2004

12/11/2004	3	12	14,573.80	33.3	4.14	0.2	0.2	33.3	0.2	4.14	0.2	0
12/11/2004	4	1	14,549.90	32.29	4.14	0.2	0.2	33.05	0.2	4.14	0.2	-0.76
12/11/2004	4	2	14,606.10	33.3	4.14	0.2	0.2	33.5	0.2	4.14	0.2	-0.2
12/11/2004	4	3	14,609.80	33.35	4.14	0.2	0.2	33.45	0.2	4.14	0.2	-0.1
12/11/2004	4	4	14,587.80	33.3	4.14	0.2	0.2	33.3	0.2	4.14	0.2	0
12/11/2004	4	5	14,569	33.05	4.14	0.2	0.2	33.3	0.2	4.14	0.2	-0.25
12/11/2004	4	6	14,561.10	33.05	4.14	0.2	0.2	33.3	0.2	4.14	0.2	-0.25
12/11/2004	4	7	14,626.10	33.57	4.14	0.2	0.2	33.55	0.2	4.14	0.2	0.02
12/11/2004	4	8	14,653.10	33.57	4.14	0.2	0.2	33.59	0.2	4.14	0.2	-0.02
12/11/2004	4	9	14,604	33.3	4.14	0.2	0.2	33.45	0.2	4.14	0.2	-0.15
12/11/2004	4	10	14,537	33.05	4.14	0.2	0.2	32.95	0.2	4.14	0.2	0.1
12/11/2004	4	11	14,461.10	32	4.14	0.2	0.2	32	0.2	4.14	0.2	0
12/11/2004	4	12	14,547.10	32.65	2.98	0.2	0.2	33.15	0.2	4.14	0.2	-0.5
12/11/2004	5	1	14,387.50	28.5	2.98	0.2	0.2	31.48	0.2	4.14	0.2	-2.98
12/11/2004	5	2	14,372.90	29.84	2.98	0.2	0.2	31.46	0.2	4.14	0.2	-1.62
12/11/2004	5	3	14,372	31.44	2.98	0.2	0.2	31.45	0.2	4.14	0.2	-0.01
12/11/2004	5	4	14,322.60	28.5	2.98	0.2	0.2	31.38	0.2	4.14	0.2	-2.88
12/11/2004	5	5	14,412.90	32.29	4.14	0.2	0.2	31.51	0.2	4.14	0.2	0.78
12/11/2004	5	6	14,414.60	32.29	4.14	0.2	0.2	31.52	0.2	4.14	0.2	0.77
12/11/2004	5	7	14,353.70	28.5	2.98	0.2	0.2	31.44	0.2	4.14	0.2	-2.94
12/11/2004	5	8	14,372.60	32	4.14	0.2	0.2	31.45	0.2	4.14	0.2	0.55
12/11/2004	5	9	14,390.70	32	4.14	0.2	0.2	31.49	0.2	4.14	0.2	0.51
12/11/2004	5	10	14,457.90	33.3	4.14	0.2	0.2	32.55	0.2	4.14	0.2	0.75
12/11/2004	5	11	14,394.90	33.3	4.14	0.2	0.2	31.64	0.2	4.14	0.2	1.66
12/11/2004	5	12	14,398.90	33.59	4.14	0.2	0.2	31.64	0.2	4.14	0.2	1.95
12/11/2004	6	1	14,380.80	28.5	2.98	0.2	0.2	31.4	0.2	4.14	0.2	-2.9
12/11/2004	6	2	14,479	32.29	4.14	0.2	0.2	31.53	0.2	4.14	0.2	0.76
12/11/2004	6	3	14,412	31.51	4.14	0.2	0.2	31.45	0.2	4.14	0.2	0.06
12/11/2004	6	4	14,391.80	31.38	4.14	0.2	0.2	31.42	0.2	4.14	0.2	-0.04
12/11/2004	6	5	14,565.80	33.67	4.14	0.2	0.2	32.29	0.2	4.14	0.2	1.38
12/11/2004	6	6	14,601.40	33.59	4.14	0.2	0.2	32.55	0.2	4.14	0.2	1.04
12/11/2004	6	7	14,554.20	32.85	4.14	0.2	0.2	32	0.2	4.14	0.2	0.85
12/11/2004	6	8	14,618	33.3	4.14	0.2	0.2	32.85	0.2	4.14	0.2	0.45
12/11/2004	6	9	14,681.60	33.59	4.14	0.2	0.2	33.3	0.2	4.14	0.2	0.29
12/11/2004	6	10	14,784.70	33.88	4.14	0.2	0.2	33.64	0.2	4.14	0.2	0.24
12/11/2004	6	11	14,729.70	33.59	4.14	0.2	0.2	33.56	0.2	4.14	0.2	0.03
12/11/2004	6	12	14,806.70	36	4.14	0.2	0.2	33.67	0.2	4.14	0.2	2.33
12/11/2004	7	1	15,101.50	32.29	2.92	0.2	0.2	33.59	0.2	4.14	0.2	-1.3
12/11/2004	7	2	15,111.70	33.59	4.14	0.2	0.2	33.59	0.2	4.14	0.2	0
12/11/2004	7	3	15,255.70	35.88	4.14	0.2	0.2	34.17	0.2	4.14	0.2	1.71
12/11/2004	7	4	15,334.90	34.46	4.14	0.2	0.2	34.68	0.2	4.14	0.2	-0.22
12/11/2004	7	5	15,406.80	34.75	4.14	0.2	0.2	35.11	0.2	4.14	0.2	-0.36

Interval Data Dec.11,2004

12/11/2004	7	6	15,472.90	35.04	4.14	0.2	0.2	35.33	0.2	4.14	0.2	-0.29
12/11/2004	7	7	15,418.80	33.94	4.14	0.2	0.2	35.11	0.2	4.14	0.2	-1.17
12/11/2004	7	8	15,524	34.43	4.14	0.2	0.2	35.62	0.2	4.14	0.2	-1.19
12/11/2004	7	9	15,608.80	34.68	4.14	0.2	0.2	35.91	0.2	4.14	0.2	-1.23
12/11/2004	7	10	15,699.70	34.18	2.33	0.2	0.2	36.19	0.2	4.14	0.2	-2.01
12/11/2004	7	11	15,742.80	54.83	2.33	0.2	0.2	36.2	0.2	4.14	0.2	18.63
12/11/2004	7	12	15,853.60	54.83	2.33	0.2	0.2	36.7	0.2	4.14	0.2	18.13
12/11/2004	8	1	15,702	28.5	2.33	0.2	0.2	31.31	0.2	2.33	0.2	-2.81
12/11/2004	8	2	15,834	28.5	2.33	0.2	0.2	31.5	0.2	2.33	0.2	-3
12/11/2004	8	3	15,870.60	30.35	3.7	0.2	0.2	31.55	0.2	2.33	0.2	-1.2
12/11/2004	8	4	16,013.10	33.59	4.16	0.2	0.2	33.5	0.2	4.16	0.2	0.09
12/11/2004	8	5	16,033.80	33.59	4.16	0.2	0.2	33.59	0.2	4.16	0.2	0
12/11/2004	8	6	16,116.80	33.88	4.16	0.2	0.2	33.89	0.2	4.16	0.2	-0.01
12/11/2004	8	7	16,233.20	34.43	4.16	0.2	0.2	34.46	0.2	4.16	0.2	-0.03
12/11/2004	8	8	16,325	35.04	4.16	0.2	0.2	35.04	0.2	4.16	0.2	0
12/11/2004	8	9	16,337.90	35.04	4.16	0.2	0.2	35.19	0.2	4.16	0.2	-0.15
12/11/2004	8	10	16,486.70	38.94	4.16	0.2	0.2	36.19	0.2	4.16	0.2	2.75
12/11/2004	8	11	16,596.90	39.13	4.16	0.2	0.2	36.78	0.2	4.16	0.2	2.35
12/11/2004	8	12	16,650.80	56.66	4.16	0.2	0.2	37.07	0.2	4.16	0.2	19.59
12/11/2004	9	1	16,623.70	28.5	2.33	0.2	0.2	34.93	0.2	2.33	0.2	-6.43
12/11/2004	9	2	16,702.10	34.93	4.16	0.2	0.2	35.44	0.2	2.33	0.2	-0.51
12/11/2004	9	3	16,769.30	39.22	2.33	0.2	0.2	35.91	0.2	2.33	0.2	3.31
12/11/2004	9	4	16,906.90	39.22	2.33	0.2	0.2	36.78	0.2	2.33	0.2	2.44
12/11/2004	9	5	16,967.50	39.22	2.33	0.2	0.2	37.07	0.2	2.33	0.2	2.15
12/11/2004	9	6	17,075.50	39.76	2.33	0.2	0.2	37.71	0.2	2.33	0.2	2.05
12/11/2004	9	7	16,978.10	32.29	2.33	0.2	0.2	37.2	0.2	2.33	0.2	-4.91
12/11/2004	9	8	17,067	39.38	2.33	0.2	0.2	37.71	0.2	2.33	0.2	1.67
12/11/2004	9	9	17,220.80	60.04	4.16	0.2	0.2	38.83	0.2	2.33	0.2	21.21
12/11/2004	9	10	17,300.90	40.51	2.33	0.2	0.2	39.24	0.2	2.33	0.2	1.27
12/11/2004	9	11	17,396.80	60.04	5.1	0.2	0.2	40.19	0.2	2.33	0.2	19.85
12/11/2004	9	12	17,452	60.04	4.16	0.2	0.2	40.72	0.2	2.33	0.2	19.32
12/11/2004	10	1	17,188.70	27.45	2.31	0.2	0.2	35.94	0.2	0.2	0.2	-8.49
12/11/2004	10	2	17,312	32.29	2.33	0.2	0.2	37.65	0.2	0.2	0.2	-5.36
12/11/2004	10	3	17,366.10	38.85	0.2	0.2	0.2	38.07	0.2	0.2	0.2	0.78
12/11/2004	10	4	17,406.60	39.01	0.2	0.2	0.2	38.36	0.2	0.2	0.2	0.65
12/11/2004	10	5	17,405	38.95	0.2	0.2	0.2	38.36	0.2	0.2	0.2	0.59
12/11/2004	10	6	17,436.80	39.12	0.2	0.2	0.2	38.74	0.2	0.2	0.2	0.38
12/11/2004	10	7	17,389.50	36.7	0.2	0.2	0.2	38.24	0.2	0.2	0.2	-1.54
12/11/2004	10	8	17,508.10	39.65	0.2	0.2	0.2	39.1	0.2	0.2	0.2	0.55
12/11/2004	10	9	17,473.60	39.14	0.2	0.2	0.2	38.95	0.2	0.2	0.2	0.19
12/11/2004	10	10	17,560.80	39.47	0.2	0.2	0.2	39.44	0.2	0.2	0.2	0.03
12/11/2004	10	11	17,643.70	39.92	0.2	0.2	0.2	39.76	0.2	0.2	0.2	0.16

Interval Data Dec.11,2004

12/11/2004	10	12	17,673.90	54.83	0.2	0.2	0.2	40.83	0.2	0.2	0.2	14
12/11/2004	11	1	17,604.20	34	0.2	0.2	0.2	38.65	0.2	0.2	0.2	-4.65
12/11/2004	11	2	17,515.90	34.15	0.2	0.2	0.2	37.95	0.2	0.2	0.2	-3.8
12/11/2004	11	3	17,596.80	38.65	0.2	0.2	0.2	38.65	0.2	0.2	0.2	0
12/11/2004	11	4	17,678	39.01	0.2	0.2	0.2	39.29	0.2	0.2	0.2	-0.28
12/11/2004	11	5	17,561.10	32	0.21	0.2	0.2	38.36	0.2	0.2	0.2	-6.36
12/11/2004	11	6	17,584	34.1	0.2	0.2	0.2	38.36	0.2	0.2	0.2	-4.26
12/11/2004	11	7	17,672.20	39.01	0.2	0.2	0.2	39.14	0.2	0.2	0.2	-0.13
12/11/2004	11	8	17,711.20	38.83	0.2	0.2	0.2	39.38	0.2	0.2	0.2	-0.55
12/11/2004	11	9	17,635.20	36.7	0.2	0.2	0.2	38.92	0.2	0.2	0.2	-2.22
12/11/2004	11	10	17,661.80	36.7	0.2	0.2	0.2	39.04	0.2	0.2	0.2	-2.34
12/11/2004	11	11	17,673	37.97	0.2	0.2	0.2	39.19	0.2	0.2	0.2	-1.22
12/11/2004	11	12	17,737.40	39.65	0.2	0.2	0.2	39.63	0.2	0.2	0.2	0.02
12/11/2004	12	1	17,817.80	39.62	0.2	0.2	0.2	39.56	0.2	0.2	0.2	0.06
12/11/2004	12	2	17,817	39.37	0.2	0.2	0.2	39.62	0.2	0.2	0.2	-0.25
12/11/2004	12	3	17,876.30	40.36	0.2	0.2	0.2	40.01	0.2	0.2	0.2	0.35
12/11/2004	12	4	17,917.90	40.36	0.2	0.2	0.2	40.34	0.2	0.2	0.2	0.02
12/11/2004	12	5	17,909	40.2	0.2	0.2	0.2	40.29	0.2	0.2	0.2	-0.09
12/11/2004	12	6	17,917.10	40.2	0.2	0.2	0.2	40.34	0.2	0.2	0.2	-0.14
12/11/2004	12	7	17,922.20	40.29	0.2	0.2	0.2	40.36	0.2	0.2	0.2	-0.07
12/11/2004	12	8	17,967.10	40.36	0.2	0.2	0.2	40.36	0.2	0.2	0.2	0
12/11/2004	12	9	17,923	40.29	0.2	0.2	0.2	40.36	0.2	0.2	0.2	-0.07
12/11/2004	12	10	17,962.80	40.36	0.2	0.2	0.2	40.36	0.2	0.2	0.2	0
12/11/2004	12	11	17,996	40.36	0.2	0.2	0.2	40.36	0.2	0.2	0.2	0
12/11/2004	12	12	17,989	40.36	0.2	0.2	0.2	40.36	0.2	0.2	0.2	0
12/11/2004	13	1	17,805.10	38.22	0.2	0.2	0.2	39.79	0.2	0.2	0.2	-1.57
12/11/2004	13	2	17,753.20	38.22	0.2	0.2	0.2	39.47	0.2	0.2	0.2	-1.25
12/11/2004	13	3	17,738.20	39.47	0.2	0.2	0.2	39.43	0.2	0.2	0.2	0.04
12/11/2004	13	4	17,821	26.39	0.22	0.2	0.2	39.92	0.2	0.2	0.2	-13.53
12/11/2004	13	5	17,748.20	39.37	0.2	0.2	0.2	39.52	0.2	0.2	0.2	-0.15
12/11/2004	13	6	17,728.10	39.19	0.2	0.2	0.2	39.37	0.2	0.2	0.2	-0.18
12/11/2004	13	7	17,717.40	39.19	0.2	0.2	0.2	39.34	0.2	0.2	0.2	-0.15
12/11/2004	13	8	17,688.10	39.04	0.2	0.2	0.2	39.14	0.2	0.2	0.2	-0.1
12/11/2004	13	9	17,712.10	39.19	0.2	0.2	0.2	39.28	0.2	0.2	0.2	-0.09
12/11/2004	13	10	17,648.10	39.37	0.2	0.2	0.2	38.85	0.2	0.2	0.2	0.52
12/11/2004	13	11	17,703.10	36.65	0.2	0.2	0.2	39.24	0.2	0.2	0.2	-2.59
12/11/2004	13	12	17,615.20	32.29	0.21	0.2	0.2	38.65	0.2	0.2	0.2	-6.36
12/11/2004	14	1	17,647.50	38.74	2.33	0.2	0.2	39.24	0.2	2.33	0.2	-0.5
12/11/2004	14	2	17,601.50	36.65	2.33	0.2	0.2	38.95	0.2	2.33	0.2	-2.3
12/11/2004	14	3	17,562.50	38.74	2.33	0.2	0.2	38.74	0.2	2.33	0.2	0
12/11/2004	14	4	17,597.30	38.83	2.33	0.2	0.2	38.95	0.2	2.33	0.2	-0.12
12/11/2004	14	5	17,592	38.83	2.33	0.2	0.2	38.92	0.2	2.33	0.2	-0.09

Interval Data Dec.11,2004

12/11/2004	14	6	17,485.10	32	2.33	0.2	0.2	38.07	0.2	2.33	0.2	-6.07
12/11/2004	14	7	17,486.30	34.1	2.33	0.2	0.2	37.97	0.2	2.33	0.2	-3.87
12/11/2004	14	8	17,474.30	37.97	2.33	0.2	0.2	37.97	0.2	2.33	0.2	0
12/11/2004	14	9	17,503.40	38.26	2.33	0.2	0.2	38.22	0.2	2.33	0.2	0.04
12/11/2004	14	10	17,539	38.74	2.33	0.2	0.2	38.55	0.2	2.33	0.2	0.19
12/11/2004	14	11	17,558.20	38.92	2.33	0.2	0.2	38.75	0.2	2.33	0.2	0.17
12/11/2004	14	12	17,494.40	32.29	2.33	0.2	0.2	38.22	0.2	2.33	0.2	-5.93
12/11/2004	15	1	17,527	33.95	2.33	0.2	0.2	38.74	0.2	2.33	0.2	-4.79
12/11/2004	15	2	17,510.80	33.95	2.33	0.2	0.2	38.55	0.2	2.33	0.2	-4.6
12/11/2004	15	3	17,498.90	40.36	2.33	0.2	0.2	38.46	0.2	2.33	0.2	1.9
12/11/2004	15	4	17,566.40	39.78	2.33	0.2	0.2	39.01	0.2	2.33	0.2	0.77
12/11/2004	15	5	17,459	33.95	2.33	0.2	0.2	38.16	0.2	2.33	0.2	-4.21
12/11/2004	15	6	17,542.80	39.51	2.33	0.2	0.2	38.85	0.2	2.33	0.2	0.66
12/11/2004	15	7	17,522.70	38.85	2.33	0.2	0.2	38.65	0.2	2.33	0.2	0.2
12/11/2004	15	8	17,541.70	39.28	2.33	0.2	0.2	38.85	0.2	2.33	0.2	0.43
12/11/2004	15	9	17,531	39.28	2.33	0.2	0.2	37.93	0.2	2.33	0.2	1.35
12/11/2004	15	10	17,552.70	40.36	2.33	0.2	0.2	38.07	0.2	2.33	0.2	2.29
12/11/2004	15	11	17,510.90	40.36	2.33	0.2	0.2	37.91	0.2	2.33	0.2	2.45
12/11/2004	15	12	17,528.80	32.29	2.33	0.2	0.2	37.93	0.2	2.33	0.2	-5.64
12/11/2004	16	1	17,138.90	28.5	2.31	0.2	0.2	33.5	0.2	2.33	0.2	-5
12/11/2004	16	2	17,194.60	32.29	2.33	0.2	0.2	36.46	0.2	2.33	0.2	-4.17
12/11/2004	16	3	17,132.90	33.8	2.33	0.2	0.2	36.75	0.2	2.33	0.2	-2.95
12/11/2004	16	4	17,106.80	34.03	2.33	0.2	0.2	36.17	0.2	2.33	0.2	-2.14
12/11/2004	16	5	17,128.70	34.29	2.33	0.2	0.2	36.75	0.2	2.33	0.2	-2.46
12/11/2004	16	6	17,202.20	38.06	2.33	0.2	0.2	37.62	0.2	2.33	0.2	0.44
12/11/2004	16	7	17,279.10	38.36	2.33	0.2	0.2	38.2	0.2	2.33	0.2	0.16
12/11/2004	16	8	17,298.80	38.26	2.33	0.2	0.2	38.36	0.2	2.33	0.2	-0.1
12/11/2004	16	9	17,380.90	39.6	2.33	0.2	0.2	39.09	0.2	2.33	0.2	0.51
12/11/2004	16	10	17,468.20	40.36	2.33	0.2	0.2	39.6	0.2	2.33	0.2	0.76
12/11/2004	16	11	17,484.80	40.36	2.33	0.2	0.2	39.73	0.2	2.33	0.2	0.63
12/11/2004	16	12	17,385.10	32	2.31	0.2	0.2	39.14	0.2	2.33	0.2	-7.14
12/11/2004	17	1	17,221	22.53	2.31	0.2	0.2	27.45	0.2	2.31	0.2	-4.92
12/11/2004	17	2	17,318.30	24.15	2.31	0.2	0.2	31.35	0.2	0.2	0.2	-7.2
12/11/2004	17	3	17,358	25.87	2.31	0.2	0.2	31.44	0.2	0.2	0.2	-5.57
12/11/2004	17	4	17,426.10	26.39	0.2	0.2	0.2	31.54	0.2	0.2	0.2	-5.15
12/11/2004	17	5	17,628.10	27.45	0.2	0.2	0.2	33.54	0.2	0.2	0.2	-6.09
12/11/2004	17	6	17,662.10	28.5	0.2	0.2	0.2	33.74	0.2	0.2	0.2	-5.24
12/11/2004	17	7	17,865.50	37.96	0.2	0.2	0.2	34.75	0.2	0.2	0.2	3.21
12/11/2004	17	8	17,899	32.29	0.2	0.2	0.2	34.99	0.2	0.2	0.2	-2.7
12/11/2004	17	9	18,010.70	35	0.2	0.2	0.2	36.15	0.2	0.2	0.2	-1.15
12/11/2004	17	10	18,227.40	40.36	0.2	0.2	0.2	38.82	0.2	0.2	0.2	1.54
12/11/2004	17	11	18,394.20	54.83	0.2	0.2	0.2	39.5	0.2	0.2	0.2	15.33

Interval Data Dec.11,2004

12/11/2004	17	12	18,567.40	70.19	0.2	0.2	0.2	40.36	0.2	0.2	0.2	29.83
12/11/2004	18	1	18,498.40	31.63	0.23	0.23	0.23	35.26	0.22	0.22	0.22	-3.63
12/11/2004	18	2	18,680.80	39.27	0.23	0.23	0.23	38.55	0.22	0.22	0.22	0.72
12/11/2004	18	3	18,768.70	39.55	0.22	0.22	0.22	39.18	0.22	0.22	0.22	0.37
12/11/2004	18	4	18,844.30	39.85	0.22	0.22	0.22	39.62	0.22	0.22	0.22	0.23
12/11/2004	18	5	18,912.40	40.36	0.22	0.22	0.22	40	0.22	0.22	0.22	0.36
12/11/2004	18	6	19,023.90	40.36	0.22	0.22	0.22	40.36	0.22	0.22	0.22	0
12/11/2004	18	7	18,937.70	40.24	0.22	0.22	0.22	40.18	0.22	0.22	0.22	0.06
12/11/2004	18	8	18,972.60	40.36	0.22	0.22	0.22	40.36	0.22	0.22	0.22	0
12/11/2004	18	9	18,958.80	40.36	0.22	0.22	0.22	40.29	0.22	0.22	0.22	0.07
12/11/2004	18	10	18,987.90	40.1	0.22	0.22	0.22	40.36	0.22	0.22	0.22	-0.26
12/11/2004	18	11	19,061.50	40.1	0.22	0.22	0.22	40.36	0.22	0.22	0.22	-0.26
12/11/2004	18	12	19,116.70	70.22	0.23	0.23	0.23	50.44	0.22	0.22	0.22	19.78
12/11/2004	19	1	19,490.70	85.31	2.33	0.32	0.32	85.31	0.32	2.33	0.32	0
12/11/2004	19	2	19,442.60	70.22	0.23	0.23	0.23	70.31	0.32	0.32	0.32	-0.09
12/11/2004	19	3	19,428	85.31	2.33	0.32	0.32	70.22	0.23	0.23	0.23	15.09
12/11/2004	19	4	19,379.40	70.22	0.23	0.23	0.23	70.21	0.22	0.22	0.22	0.01
12/11/2004	19	5	19,282.50	55.2	0.2	0.2	0.2	55.17	0.2	0.2	0.2	0.03
12/11/2004	19	6	19,287	56.21	0.2	0.2	0.2	53.6	0.2	0.2	0.2	2.61
12/11/2004	19	7	19,276.70	55.2	0.2	0.2	0.2	53.6	0.2	0.2	0.2	1.6
12/11/2004	19	8	19,278	55.52	0.2	0.2	0.2	53.6	0.2	0.2	0.2	1.92
12/11/2004	19	9	19,184.70	40.73	0.2	0.2	0.2	40.54	0.2	0.2	0.2	0.19
12/11/2004	19	10	19,085.60	40.36	0.2	0.2	0.2	40.36	0.2	0.2	0.2	0
12/11/2004	19	11	19,122.50	39.93	0.2	0.2	0.2	40.36	0.2	0.2	0.2	-0.43
12/11/2004	19	12	19,017.50	40.36	0.2	0.2	0.2	40.18	0.2	0.2	0.2	0.18
12/11/2004	20	1	19,495.90	85.32	0.32	0.32	0.32	70.19	0.2	0.2	0.2	15.13
12/11/2004	20	2	19,453.70	85.31	0.32	0.32	0.32	62.34	0.2	0.2	0.2	22.97
12/11/2004	20	3	19,328.10	70.19	0.2	0.2	0.2	62.34	0.2	0.2	0.2	7.85
12/11/2004	20	4	19,258.70	65.19	0.2	0.2	0.2	62.34	0.2	0.2	0.2	2.85
12/11/2004	20	5	19,254.20	65.19	0.2	0.2	0.2	62.34	0.2	0.2	0.2	2.85
12/11/2004	20	6	19,234.50	60.51	0.2	0.2	0.2	59.45	0.2	0.2	0.2	1.06
12/11/2004	20	7	19,203.10	55.19	0.2	0.2	0.2	59.45	0.2	0.2	0.2	-4.26
12/11/2004	20	8	19,072.10	54.65	0.2	0.2	0.2	54.83	0.2	0.2	0.2	-0.18
12/11/2004	20	9	19,109.70	54.42	0.2	0.2	0.2	54.83	0.2	0.2	0.2	-0.41
12/11/2004	20	10	19,004.60	40.36	0.2	0.2	0.2	54.83	0.2	0.2	0.2	-14.47
12/11/2004	20	11	18,880.70	40.36	0.2	0.2	0.2	53.38	0.2	0.2	0.2	-13.02
12/11/2004	20	12	18,901.80	40.36	0.2	0.2	0.2	53.73	0.2	0.2	0.2	-13.37
12/11/2004	21	1	18,717.60	70.19	0.2	0.2	0.2	85.19	0.2	0.2	0.2	-15
12/11/2004	21	2	18,608.30	65.19	0.2	0.2	0.2	58.08	0.2	0.2	0.2	7.11
12/11/2004	21	3	18,555.10	55.19	0.2	0.2	0.2	56.5	0.2	0.2	0.2	-1.31
12/11/2004	21	4	18,575.30	57.62	0.2	0.2	0.2	57.62	0.2	0.2	0.2	0
12/11/2004	21	5	18,523.50	40.76	0.2	0.2	0.2	56.5	0.2	0.2	0.2	-15.74

Interval Data Dec.11,2004

12/11/2004	21	6	18,453.60	40.5	0.2	0.2	0.2	55.19	0.2	0.2	0.2	-14.69
12/11/2004	21	7	18,358.30	40.36	0.2	0.2	0.2	56.5	0.2	0.2	0.2	-16.14
12/11/2004	21	8	18,393.30	40.5	0.2	0.2	0.2	56.5	0.2	0.2	0.2	-16
12/11/2004	21	9	18,401.60	54.83	0.2	0.2	0.2	56.5	0.2	0.2	0.2	-1.67
12/11/2004	21	10	18,303.10	40.36	0.2	0.2	0.2	54.83	0.2	0.2	0.2	-14.47
12/11/2004	21	11	18,293.50	40.36	0.2	0.2	0.2	54.83	0.2	0.2	0.2	-14.47
12/11/2004	21	12	18,245.30	39.56	0.2	0.2	0.2	41.77	0.2	0.2	0.2	-2.21
12/11/2004	22	1	18,080	40.75	0.2	0.2	0.2	65.19	0.2	0.2	0.2	-24.44
12/11/2004	22	2	18,004.80	40.21	0.2	0.2	0.2	58	0.2	0.2	0.2	-17.79
12/11/2004	22	3	18,037.20	40.75	0.2	0.2	0.2	58.45	0.2	0.2	0.2	-17.7
12/11/2004	22	4	17,943.40	40.28	0.2	0.2	0.2	56.54	0.2	0.2	0.2	-16.26
12/11/2004	22	5	17,854.50	39.92	0.2	0.2	0.2	54.83	0.2	0.2	0.2	-14.91
12/11/2004	22	6	17,812.60	68.19	0.2	0.2	0.2	54.83	0.2	0.2	0.2	13.36
12/11/2004	22	7	17,756.30	45.41	0.2	0.2	0.2	41.96	0.2	0.2	0.2	3.45
12/11/2004	22	8	17,741.60	40.75	0.2	0.2	0.2	41.96	0.2	0.2	0.2	-1.21
12/11/2004	22	9	17,695.40	40.55	0.2	0.2	0.2	41.11	0.2	0.2	0.2	-0.56
12/11/2004	22	10	17,641.70	40.22	0.2	0.2	0.2	40.55	0.2	0.2	0.2	-0.33
12/11/2004	22	11	17,571.60	37.77	0.2	0.2	0.2	40.28	0.2	0.2	0.2	-2.51
12/11/2004	22	12	17,560.70	30	0.2	0.2	0.2	40.28	0.2	0.2	0.2	-10.28
12/11/2004	23	1	17,341.60	64.01	0.2	0.2	0.2	54.83	0.2	0.2	0.2	9.18
12/11/2004	23	2	17,275.40	45.41	0.2	0.2	0.2	45.41	0.2	0.2	0.2	0
12/11/2004	23	3	17,063.70	32.43	0.2	0.2	0.2	40.38	0.2	0.2	0.2	-7.95
12/11/2004	23	4	16,886.30	32.41	0.2	0.2	0.2	39.8	0.2	0.2	0.2	-7.39
12/11/2004	23	5	16,912.40	38.27	0.2	0.2	0.2	39.84	0.2	0.2	0.2	-1.57
12/11/2004	23	6	16,779.50	37.43	0.2	0.2	0.2	39.38	0.2	0.2	0.2	-1.95
12/11/2004	23	7	16,645.50	36.86	0.2	0.2	0.2	38.94	0.2	0.2	0.2	-2.08
12/11/2004	23	8	16,649.50	38.65	0.2	0.2	0.2	38.94	0.2	0.2	0.2	-0.29
12/11/2004	23	9	16,602.80	37.99	0.2	0.2	0.2	38.81	0.2	0.2	0.2	-0.82
12/11/2004	23	10	16,521.40	37.65	0.2	0.2	0.2	38.54	0.2	0.2	0.2	-0.89
12/11/2004	23	11	16,491.30	33.3	0.2	0.2	0.2	38.36	0.2	0.2	0.2	-5.06
12/11/2004	23	12	16,382.70	31.65	0.2	0.2	0.2	38.14	0.2	0.2	0.2	-6.49
Average Daily				39.39043478				39.95416667				

Interval Data Dec.12,2004

ATTENTION:

The following draft data is provided for informational purposes and general use to members of the IMO Market Pricing Working Group and their representatives. While the IMO has attempted to ensure the accuracy of the information, no warranty is expressed or implied as to the accuracy, adequacy or completeness of the draft data. Recipients of the draft data agree not to misuse or misrepresent the draft data or to use it for commercial purposes.

Date	Hour	Interval	RTU Demand	MIO:				12X Ramp:				MIO - 12x
				MCP	Price 10S	Price 10N	Price 30R	Price MCP	Price 10N	Price 10S	Price 30R	MCP
12/12/2004	13	1	17,767.80	40.12	2.33	0.2	0.2	40.59	0.2	2.33	0.2	-0.47
12/12/2004	13	2	17,789.70	40.13	2.33	0.2	0.2	40.7	0.2	2.33	0.2	-0.57
12/12/2004	13	3	17,777.50	40.36	2.33	0.2	0.2	40.7	0.2	2.33	0.2	-0.34
12/12/2004	13	4	17,837.90	40.7	2.33	0.2	0.2	41.05	0.2	2.33	0.2	-0.35
12/12/2004	13	5	17,854.70	40.7	2.33	0.2	0.2	41.28	0.2	2.33	0.2	-0.58
12/12/2004	13	6	17,810.90	40.37	2.33	0.2	0.2	40.99	0.2	2.33	0.2	-0.62
12/12/2004	13	7	17,741.40	40.11	2.33	0.2	0.2	40.42	0.2	2.33	0.2	-0.31
12/12/2004	13	8	17,736.30	40.11	2.33	0.2	0.2	40.42	0.2	2.33	0.2	-0.31
12/12/2004	13	9	17,728.60	40.11	2.33	0.2	0.2	40.37	0.2	2.33	0.2	-0.26
12/12/2004	13	10	17,752.30	40.12	2.33	0.2	0.2	40.42	0.2	2.33	0.2	-0.3
12/12/2004	13	11	17,817.40	40.37	2.33	0.2	0.2	40.99	0.2	2.33	0.2	-0.62
12/12/2004	13	12	17,843.10	39.75	2.33	0.2	0.2	41.05	0.2	2.33	0.2	-1.3
12/12/2004	14	1	17,823.50	65	4.16	0.2	0.2	54.83	0.2	2.33	0.2	10.17
12/12/2004	14	2	17,866.20	65.19	4.16	0.2	0.2	63.33	0.2	10.83	0.2	1.86
12/12/2004	14	3	17,852.10	65	2.33	0.2	0.2	54.83	0.2	2.33	0.2	10.17
12/12/2004	14	4	17,828.40	40.95	2.33	0.2	0.2	54.83	0.2	2.33	0.2	-13.88
12/12/2004	14	5	17,787.40	40.72	2.33	0.2	0.2	41.01	0.2	2.33	0.2	-0.29
12/12/2004	14	6	17,829.10	40.95	2.33	0.2	0.2	54.83	0.2	2.33	0.2	-13.88
12/12/2004	14	7	17,821.50	40.95	2.33	0.2	0.2	54.83	0.2	2.33	0.2	-13.88
12/12/2004	14	8	17,812.30	40.72	2.33	0.2	0.2	54.83	0.2	2.33	0.2	-14.11
12/12/2004	14	9	17,869.50	65	4.16	0.2	0.2	63.33	0.2	10.83	0.2	1.67
12/12/2004	14	10	17,937.30	65.59	4.16	0.2	0.2	65.59	0.2	10.83	0.2	0
12/12/2004	14	11	17,893.50	65	4.16	0.2	0.2	65.19	0.2	10.83	0.2	-0.19
12/12/2004	14	12	17,900.20	65.59	4.16	0.2	0.2	65.19	0.2	10.83	0.2	0.4
12/12/2004	15	1	17,937	65.59	10.83	0.2	0.2	65.59	0.2	10.83	0.2	0
12/12/2004	15	2	18,026.90	69.71	10.83	0.2	0.2	69.71	0.2	10.83	0.2	0
12/12/2004	15	3	18,057.80	69.71	10.83	0.2	0.2	69.71	0.2	10.83	0.2	0
12/12/2004	15	4	18,092.80	71.95	10.83	0.2	0.2	71.95	0.2	10.83	0.2	0
12/12/2004	15	5	18,093.90	71.95	10.83	0.2	0.2	71.95	0.2	10.83	0.2	0
12/12/2004	15	6	18,089	71.95	10.83	0.2	0.2	71.95	0.2	10.83	0.2	0
12/12/2004	15	7	18,025.70	69.71	10.83	0.2	0.2	69.71	0.2	10.83	0.2	0
12/12/2004	15	8	18,023	69.71	10.83	0.2	0.2	68.62	0.2	10.83	0.2	1.09
12/12/2004	15	9	17,971	68.19	3.2	0.2	0.2	65.59	0.2	10.83	0.2	2.6
12/12/2004	15	10	18,026.90	69.71	4.72	0.2	0.2	69.71	0.2	10.83	0.2	0
12/12/2004	15	11	18,126.80	75.82	10.83	0.2	0.2	71.95	0.2	10.83	0.2	3.87

Interval Data Dec.12,2004

12/12/2004	15	12	18,166.10	71.95	6.97	0.2	0.2	76.06	0.2	10.83	0.2	-4.11
12/12/2004	16	1	18,052.60	35.32	2.33	0.2	0.2	40.03	0.2	0.2	0.2	-4.71
12/12/2004	16	2	18,113.90	40.48	2.33	0.2	0.2	40.29	0.2	0.2	0.2	0.19
12/12/2004	16	3	18,157.20	40.03	0.2	0.2	0.2	40.45	0.2	0.2	0.2	-0.42
12/12/2004	16	4	18,190.20	40.25	0.2	0.2	0.2	40.7	0.2	0.2	0.2	-0.45
12/12/2004	16	5	18,166.70	40.2	0.2	0.2	0.2	40.48	0.2	0.2	0.2	-0.28
12/12/2004	16	6	18,233.80	40.45	0.2	0.2	0.2	40.95	0.2	0.2	0.2	-0.5
12/12/2004	16	7	18,353.80	40.7	0.2	0.2	0.2	65	0.2	0.2	0.2	-24.3
12/12/2004	16	8	18,310.50	40.72	0.2	0.2	0.2	54.83	0.2	0.2	0.2	-14.11
12/12/2004	16	9	18,472.60	65.59	0.6	0.2	0.2	65.59	0.2	0.6	0.2	0
12/12/2004	16	10	18,584.90	76.06	2.33	0.2	0.2	69.72	0.2	4.73	0.2	6.34
12/12/2004	16	11	18,651.60	76.17	2.33	0.21	0.21	67.42	0.2	2.43	0.2	8.75
12/12/2004	16	12	18,718.40	65.59	0.6	0.2	0.2	66.6	0.2	1.61	0.2	-1.01
12/12/2004	17	1	18,132.80	25.79	0.2	0.2	0.2	38.11	0.2	0.2	0.2	-12.32
12/12/2004	17	2	18,180	28.42	0.2	0.2	0.2	38.19	0.2	0.2	0.2	-9.77
12/12/2004	17	3	18,327.20	33.85	0.2	0.2	0.2	38.56	0.2	0.2	0.2	-4.71
12/12/2004	17	4	18,439	38.71	0.2	0.2	0.2	38.85	0.2	0.2	0.2	-0.14
12/12/2004	17	5	18,511.90	39.24	0.2	0.2	0.2	39.37	0.2	0.2	0.2	-0.13
12/12/2004	17	6	18,628.80	34.15	0.2	0.2	0.2	39.76	0.2	0.2	0.2	-5.61
12/12/2004	17	7	18,740.20	54.83	0.2	0.2	0.2	40.14	0.2	0.2	0.2	14.69
12/12/2004	17	8	18,895.50	67.91	0.2	0.2	0.2	40.72	0.2	0.2	0.2	27.19
12/12/2004	17	9	19,059.60	70.19	0.2	0.2	0.2	54.83	0.2	0.2	0.2	15.36
12/12/2004	17	10	19,228.50	74.18	0.2	0.2	0.2	67.91	0.2	0.2	0.2	6.27
12/12/2004	17	11	19,437.90	85.21	0.22	0.22	0.22	78.86	0.2	0.2	0.2	6.35
12/12/2004	17	12	19,579.10	95.31	0.32	0.32	0.32	85.31	0.32	0.32	0.32	10
12/12/2004	18	1	19,516.50	104.26	19.27	19.27	19.27	41	0.32	0.32	0.32	63.26
12/12/2004	18	2	19,620	114.86	29.87	29.87	29.87	55.79	0.54	0.54	0.54	59.07
12/12/2004	18	3	19,783.90	56.94	0.59	0.59	0.59	56.25	0.54	0.54	0.54	0.69
12/12/2004	18	4	19,914.50	86.24	16.25	16.25	16.25	57.96	0.59	0.59	0.59	28.28
12/12/2004	18	5	19,996.60	89.69	19.27	19.27	19.27	58.48	0.59	0.59	0.59	31.21
12/12/2004	18	6	20,019	89.69	19.27	19.27	19.27	58.64	0.59	0.59	0.59	31.05
12/12/2004	18	7	19,971	86.24	16.25	16.25	16.25	58.37	0.59	0.59	0.59	27.87
12/12/2004	18	8	19,928.50	57.52	0.59	0.59	0.59	58.06	0.59	0.59	0.59	-0.54
12/12/2004	18	9	20,000.70	86.24	16.25	16.25	16.25	58.51	0.59	0.59	0.59	27.73
12/12/2004	18	10	19,949.10	56.88	0.59	0.59	0.59	58.17	0.59	0.59	0.59	-1.29
12/12/2004	18	11	19,972.70	55.67	0.49	0.49	0.49	58.37	0.59	0.59	0.59	-2.7
12/12/2004	18	12	19,922.60	104.26	19.27	19.27	19.27	57.98	0.59	0.59	0.59	46.28
12/12/2004	19	1	20,394.20	137.69	30.08	30	30	99.99	30	30	30	37.7
12/12/2004	19	2	20,307.50	120	30	30	30	72.54	16.25	16.25	16.25	47.46
12/12/2004	19	3	20,244.90	71.53	16.25	16.25	16.25	57.23	2.05	2.05	2.05	14.3
12/12/2004	19	4	20,219.30	56.71	1.53	1.53	1.53	71.43	16.25	16.25	16.25	-14.72
12/12/2004	19	5	20,173.60	56.42	1.24	1.24	1.24	57.16	1.98	1.98	1.98	-0.74

Interval Data Dec.12,2004

12/12/2004	19	6	20,208.80	74.46	16.25	16.25	16.25	71.43	16.25	16.25	16.25	3.03
12/12/2004	19	7	20,132.90	56.53	1.35	1.35	1.35	56.84	1.66	1.66	1.66	-0.31
12/12/2004	19	8	20,156.50	57.52	2.34	2.34	2.34	56.97	1.79	1.79	1.79	0.55
12/12/2004	19	9	20,134.30	56.58	1.4	1.4	1.4	56.84	1.66	1.66	1.66	-0.26
12/12/2004	19	10	20,054.30	41	0.59	0.59	0.59	56.31	1.13	1.13	1.13	-15.31
12/12/2004	19	11	20,022.10	40.93	0.59	0.59	0.59	56.11	0.93	0.93	0.93	-15.18
12/12/2004	19	12	20,049.30	71.53	16.25	16.25	16.25	56.31	1.13	1.13	1.13	15.22
12/12/2004	20	1	20,219.80	119.01	29.02	29.02	29.02	104.26	19.27	19.27	19.27	14.75
12/12/2004	20	2	20,165.20	101.24	16.25	16.25	16.25	101.24	16.25	16.25	16.25	0
12/12/2004	20	3	20,095.10	70.34	0.35	0.35	0.35	70.58	0.59	0.59	0.59	-0.24
12/12/2004	20	4	20,067.40	70.34	0.35	0.35	0.35	70.53	0.54	0.54	0.54	-0.19
12/12/2004	20	5	19,979.40	57.84	0.32	0.32	0.32	61.36	0.32	0.32	0.32	-3.52
12/12/2004	20	6	19,871.90	55.6	0.32	0.32	0.32	59.92	0.32	0.32	0.32	-4.32
12/12/2004	20	7	19,829.90	57.38	0.32	0.32	0.32	59.56	0.32	0.32	0.32	-2.18
12/12/2004	20	8	19,821.30	57.52	0.32	0.32	0.32	59.46	0.32	0.32	0.32	-1.94
12/12/2004	20	9	19,796.40	56.61	0.32	0.32	0.32	59.04	0.32	0.32	0.32	-2.43
12/12/2004	20	10	19,756.40	55.5	0.23	0.23	0.23	58.62	0.32	0.32	0.32	-3.12
12/12/2004	20	11	19,670.10	41.42	0.23	0.23	0.23	57.04	0.32	0.32	0.32	-15.62
12/12/2004	20	12	19,696.70	55	0.23	0.23	0.23	58.51	0.32	0.32	0.32	-3.51
12/12/2004	21	1	19,821.70	85.2	0.21	0.21	0.21	70.19	0.2	0.2	0.2	15.01
12/12/2004	21	2	19,739.50	70.19	0.2	0.2	0.2	68.19	0.2	0.2	0.2	2
12/12/2004	21	3	19,740.80	70.19	0.2	0.2	0.2	70.19	0.2	0.2	0.2	0
12/12/2004	21	4	19,723.80	70.19	0.2	0.2	0.2	70.19	0.2	0.2	0.2	0
12/12/2004	21	5	19,549.70	55.5	0.2	0.2	0.2	55.54	0.2	0.2	0.2	-0.04
12/12/2004	21	6	19,501.60	55.34	0.2	0.2	0.2	55.5	0.2	0.2	0.2	-0.16
12/12/2004	21	7	19,504.40	55.34	0.2	0.2	0.2	55.96	0.2	0.2	0.2	-0.62
12/12/2004	21	8	19,456.70	55.12	0.2	0.2	0.2	55.73	0.2	0.2	0.2	-0.61
12/12/2004	21	9	19,404.70	55.5	0.2	0.2	0.2	55.5	0.2	0.2	0.2	0
12/12/2004	21	10	19,385.90	55.02	0.2	0.2	0.2	55.47	0.2	0.2	0.2	-0.45
12/12/2004	21	11	19,381.80	54.79	0.2	0.2	0.2	55.44	0.2	0.2	0.2	-0.65
12/12/2004	21	12	19,321.50	28.42	0.2	0.2	0.2	55.13	0.2	0.2	0.2	-26.71
12/12/2004	22	1	18,945.70	65.19	0.2	0.2	0.2	65.19	0.2	0.2	0.2	0
12/12/2004	22	2	18,895.90	64.2	0.2	0.2	0.2	65.19	0.2	0.2	0.2	-0.99
12/12/2004	22	3	18,737.80	56.87	0.2	0.2	0.2	56.87	0.2	0.2	0.2	0
12/12/2004	22	4	18,665.10	55.81	0.2	0.2	0.2	55.56	0.2	0.2	0.2	0.25
12/12/2004	22	5	18,551.20	55.5	0.2	0.2	0.2	55.3	0.2	0.2	0.2	0.2
12/12/2004	22	6	18,520	55.43	0.2	0.2	0.2	55.12	0.2	0.2	0.2	0.31
12/12/2004	22	7	18,489.20	55.32	0.2	0.2	0.2	54.3	0.2	0.2	0.2	1.02
12/12/2004	22	8	18,323.30	39.63	0.2	0.2	0.2	52.86	0.2	0.2	0.2	-13.23
12/12/2004	22	9	18,343.20	40.69	0.2	0.2	0.2	52.86	0.2	0.2	0.2	-12.17
12/12/2004	22	10	18,155	35.32	0.2	0.2	0.2	40.69	0.2	0.2	0.2	-5.37
12/12/2004	22	11	18,031.90	35.32	0.2	0.2	0.2	40.19	0.2	0.2	0.2	-4.87

Interval Data Dec.12,2004

12/12/2004	22	12	18,072	35.32	0.2	0.2	0.2	40.28	0.2	0.2	0.2	-4.96
12/12/2004	23	1	18,277.20	70.19	0.2	0.2	0.2	65.19	0.2	0.2	0.2	5
12/12/2004	23	2	18,134.20	56.51	0.2	0.2	0.2	56.05	0.2	0.2	0.2	0.46
12/12/2004	23	3	17,955.50	39.63	0.2	0.2	0.2	55.24	0.2	0.2	0.2	-15.61
12/12/2004	23	4	17,856.30	40.28	0.2	0.2	0.2	55	0.2	0.2	0.2	-14.72
12/12/2004	23	5	17,743.40	40.44	0.2	0.2	0.2	53.56	0.2	0.2	0.2	-13.12
12/12/2004	23	6	17,682.20	54.56	0.2	0.2	0.2	53.56	0.2	0.2	0.2	1
12/12/2004	23	7	17,604.40	39.7	0.2	0.2	0.2	40.45	0.2	0.2	0.2	-0.75
12/12/2004	23	8	17,401.30	35.32	0.2	0.2	0.2	39.99	0.2	0.2	0.2	-4.67
12/12/2004	23	9	17,313.50	35.32	0.2	0.2	0.2	39.7	0.2	0.2	0.2	-4.38
12/12/2004	23	10	17,157.50	38.45	0.2	0.2	0.2	39.23	0.2	0.2	0.2	-0.78
12/12/2004	23	11	17,067.60	31.59	0.2	0.2	0.2	38.99	0.2	0.2	0.2	-7.4
12/12/2004	23	12	17,096.40	31.65	0.2	0.2	0.2	39.06	0.2	0.2	0.2	-7.41
12/12/2004	24	1	17,335.90	58.53	4.14	0.2	0.2	49.51	0.2	7.24	0.2	9.02
12/12/2004	24	2	17,160.10	39.63	4.14	0.2	0.2	40.42	0.2	4.14	0.2	-0.79
12/12/2004	24	3	17,056.10	39.2	4.14	0.2	0.2	39.98	0.2	4.14	0.2	-0.78
12/12/2004	24	4	16,883.20	38.99	4.14	0.2	0.2	39.45	0.2	4.14	0.2	-0.46
12/12/2004	24	5	16,824	38.95	4.14	0.2	0.2	39.27	0.2	4.14	0.2	-0.32
12/12/2004	24	6	16,668.40	38.7	4.14	0.2	0.2	38.7	0.2	4.14	0.2	0
12/12/2004	24	7	16,509.80	35.32	4.14	0.2	0.2	38.21	0.2	4.14	0.2	-2.89
12/12/2004	24	8	16,407	35.32	4.14	0.2	0.2	38.02	0.2	4.14	0.2	-2.7
12/12/2004	24	9	16,353	37.71	4.14	0.2	0.2	37.89	0.2	4.14	0.2	-0.18
12/12/2004	24	10	16,312.30	37.66	4.14	0.2	0.2	37.76	0.2	4.14	0.2	-0.1
12/12/2004	24	11	16,221.20	37.39	4.14	0.2	0.2	37.55	0.2	4.14	0.2	-0.16
12/12/2004	24	12	16,053.10	28.42	4.14	0.2	0.2	37.19	0.2	4.14	0.2	-8.77
Average Daily				56.60388889				55.07666667				

Interval Data Dec.13,2004

ATTENTION:

The following draft data is provided for informational purposes and general use to members of the IMO Market Pricing Working Group and their representatives. While the IMO has attempted to ensure the accuracy of the information, no warranty is expressed or implied as to the accuracy, adequacy or completeness of the draft data. Recipients of the draft data agree not to misuse or misrepresent the draft data or to use it for commercial purposes.

Date	Hour	Interval	RTU Demand	MIO:				12X Ramp:				MIO - 12x
				MCP	Price 10S	Price 10N	Price 30R	MCP	Price 10N	Price 10S	Price 30R	MCP
12/13/2004	1	1	15,768.6	37.7	4.14	0.2	0.2	37.59	0.2	4.14	0.2	0.11
12/13/2004	1	2	15,700.9	37.59	4.14	0.2	0.2	37.45	0.2	4.14	0.2	0.14
12/13/2004	1	3	15,730.1	37.59	4.14	0.2	0.2	37.56	0.2	4.14	0.2	0.03
12/13/2004	1	4	15,613.5	37.2	4.14	0.2	0.2	37.2	0.2	4.14	0.2	0
12/13/2004	1	5	15,582.3	37.2	4.14	0.2	0.2	37.2	0.2	4.14	0.2	0
12/13/2004	1	6	15,571.	37.15	4.14	0.2	0.2	37.15	0.2	4.14	0.2	0
12/13/2004	1	7	15,427.1	35.32	4.14	0.2	0.2	36.73	0.2	4.14	0.2	-1.41
12/13/2004	1	8	15,395.9	36.67	4.14	0.2	0.2	36.69	0.2	4.14	0.2	-0.02
12/13/2004	1	9	15,319.8	36.4	4.14	0.2	0.2	36.44	0.2	4.14	0.2	-0.04
12/13/2004	1	10	15,233.4	35.32	4.14	0.2	0.2	36.16	0.2	4.14	0.2	-0.84
12/13/2004	1	11	15,230.3	36.13	4.14	0.2	0.2	36.16	0.2	4.14	0.2	-0.03
12/13/2004	1	12	15,141.1	35.32	4.14	0.2	0.2	35.82	0.2	4.14	0.2	-0.5
12/13/2004	2	1	15,161.	47.64	4.14	0.2	0.2	36.42	0.2	4.14	0.2	11.22
12/13/2004	2	2	15,141.	36.34	4.14	0.2	0.2	36.41	0.2	4.14	0.2	-0.07
12/13/2004	2	3	15,104.	36.14	4.14	0.2	0.2	36.34	0.2	4.14	0.2	-0.2
12/13/2004	2	4	15,070.	36.14	4.14	0.2	0.2	36.14	0.2	4.14	0.2	0
12/13/2004	2	5	15,027.5	35.87	4.14	0.2	0.2	36.08	0.2	4.14	0.2	-0.21
12/13/2004	2	6	15,096.5	36.41	4.14	0.2	0.2	36.16	0.2	4.14	0.2	0.25
12/13/2004	2	7	15,131.1	36.41	4.14	0.2	0.2	36.41	0.2	4.14	0.2	0
12/13/2004	2	8	15,088.	36.14	4.14	0.2	0.2	36.16	0.2	4.14	0.2	-0.02
12/13/2004	2	9	15,002.4	35.32	4.14	0.2	0.2	35.87	0.2	4.14	0.2	-0.55
12/13/2004	2	10	14,887.1	35.32	4.14	0.2	0.2	35.32	0.2	4.14	0.2	0
12/13/2004	2	11	14,922.3	35.32	4.14	0.2	0.2	35.55	0.2	4.14	0.2	-0.23
12/13/2004	2	12	14,890.8	35.32	4.14	0.2	0.2	35.34	0.2	4.14	0.2	-0.02
12/13/2004	3	1	14,883.2	35.33	4.14	0.2	0.2	35.34	0.2	4.14	0.2	-0.01
12/13/2004	3	2	14,924.3	35.6	4.14	0.2	0.2	35.63	0.2	4.14	0.2	-0.03
12/13/2004	3	3	14,933.2	35.6	4.14	0.2	0.2	35.63	0.2	4.14	0.2	-0.03
12/13/2004	3	4	14,899.	35.34	4.14	0.2	0.2	35.34	0.2	4.14	0.2	0
12/13/2004	3	5	14,933.2	35.6	4.14	0.2	0.2	35.63	0.2	4.14	0.2	-0.03
12/13/2004	3	6	14,922.3	35.6	4.14	0.2	0.2	35.6	0.2	4.14	0.2	0
12/13/2004	3	7	14,913.8	35.34	4.14	0.2	0.2	35.6	0.2	4.14	0.2	-0.26
12/13/2004	3	8	14,837.5	35.32	4.14	0.2	0.2	35.32	0.2	4.14	0.2	0
12/13/2004	3	9	14,884.4	35.33	4.14	0.2	0.2	35.34	0.2	4.14	0.2	-0.01
12/13/2004	3	10	14,848.	35.32	4.14	0.2	0.2	35.32	0.2	4.14	0.2	0
12/13/2004	3	11	14,844.3	35.32	4.14	0.2	0.2	35.32	0.2	4.14	0.2	0

Interval Data Dec.13,2004

12/13/2004	3	12	14,826.	35.32	4.14	0.2	0.2	35.32	0.2	4.14	0.2	0
12/13/2004	4	1	14,825.1	35.28	4.14	0.2	0.2	35.32	0.2	4.14	0.2	-0.04
12/13/2004	4	2	14,851.	35.32	4.14	0.2	0.2	35.32	0.2	4.14	0.2	0
12/13/2004	4	3	14,937.9	35.32	4.14	0.2	0.2	35.32	0.2	4.14	0.2	0
12/13/2004	4	4	14,864.2	35.32	4.14	0.2	0.2	35.32	0.2	4.14	0.2	0
12/13/2004	4	5	14,793.1	35.04	4.14	0.2	0.2	35.28	0.2	4.14	0.2	-0.24
12/13/2004	4	6	14,756.1	34.7	4.14	0.2	0.2	34.99	0.2	4.14	0.2	-0.29
12/13/2004	4	7	14,789.1	35.06	4.14	0.2	0.2	35.28	0.2	4.14	0.2	-0.22
12/13/2004	4	8	14,814.2	35.28	4.14	0.2	0.2	35.32	0.2	4.14	0.2	-0.04
12/13/2004	4	9	14,765.2	34.99	4.14	0.2	0.2	35.04	0.2	4.14	0.2	-0.05
12/13/2004	4	10	14,854.2	35.32	4.14	0.2	0.2	35.32	0.2	4.14	0.2	0
12/13/2004	4	11	14,888.7	35.32	4.14	0.2	0.2	35.32	0.2	4.14	0.2	0
12/13/2004	4	12	14,885.2	35.32	4.14	0.2	0.2	35.32	0.2	4.14	0.2	0
12/13/2004	5	1	14,945.9	34.99	4.14	0.2	0.2	35.06	0.2	4.14	0.2	-0.07
12/13/2004	5	2	14,980.	35.28	4.14	0.2	0.2	35.28	0.2	4.14	0.2	0
12/13/2004	5	3	15,001.1	35.28	4.14	0.2	0.2	35.32	0.2	4.14	0.2	-0.04
12/13/2004	5	4	15,058.3	35.32	4.14	0.2	0.2	35.32	0.2	4.14	0.2	0
12/13/2004	5	5	15,086.2	35.32	4.14	0.2	0.2	35.32	0.2	4.14	0.2	0
12/13/2004	5	6	15,101.1	35.32	4.14	0.2	0.2	35.32	0.2	4.14	0.2	0
12/13/2004	5	7	15,094.2	35.32	4.14	0.2	0.2	35.32	0.2	4.14	0.2	0
12/13/2004	5	8	15,072.1	35.32	4.14	0.2	0.2	35.32	0.2	4.14	0.2	0
12/13/2004	5	9	15,118.2	35.32	4.14	0.2	0.2	35.32	0.2	4.14	0.2	0
12/13/2004	5	10	15,137.3	35.32	4.14	0.2	0.2	35.33	0.2	4.14	0.2	-0.01
12/13/2004	5	11	15,212.1	35.32	4.14	0.2	0.2	35.79	0.2	4.14	0.2	-0.47
12/13/2004	5	12	15,306.	50.45	4.14	0.2	0.2	36.12	0.2	4.14	0.2	14.33
12/13/2004	6	1	15,572.9	34.13	4.14	0.2	0.2	36.13	0.2	4.14	0.2	-2
12/13/2004	6	2	15,520.2	33.83	4.14	0.2	0.2	35.86	0.2	4.14	0.2	-2.03
12/13/2004	6	3	15,624.2	47.9	4.14	0.2	0.2	36.31	0.2	4.14	0.2	11.59
12/13/2004	6	4	15,740.3	47.47	4.14	0.2	0.2	36.67	0.2	4.14	0.2	10.8
12/13/2004	6	5	15,834.	38.18	4.14	0.2	0.2	36.73	0.2	4.14	0.2	1.45
12/13/2004	6	6	15,889.5	36.96	4.14	0.2	0.2	36.93	0.2	4.14	0.2	0.03
12/13/2004	6	7	15,941.	37.19	4.14	0.2	0.2	36.96	0.2	4.14	0.2	0.23
12/13/2004	6	8	15,992.6	37.2	4.14	0.2	0.2	37.19	0.2	4.14	0.2	0.01
12/13/2004	6	9	16,138.3	37.68	4.14	0.2	0.2	37.43	0.2	4.14	0.2	0.25
12/13/2004	6	10	16,262.	37.89	4.14	0.2	0.2	37.68	0.2	4.14	0.2	0.21
12/13/2004	6	11	16,350.5	38.18	4.14	0.2	0.2	37.89	0.2	4.14	0.2	0.29
12/13/2004	6	12	16,422.1	55.5	4.14	0.2	0.2	38.	0.2	4.14	0.2	17.5
12/13/2004	7	1	16,564.4	25.53	4.14	0.2	0.2	36.95	0.2	4.14	0.2	-11.42
12/13/2004	7	2	16,681.5	28.32	4.14	0.2	0.2	37.2	0.2	4.14	0.2	-8.88
12/13/2004	7	3	16,819.3	37.1	4.14	0.2	0.2	37.61	0.2	4.14	0.2	-0.51
12/13/2004	7	4	16,987.5	37.63	4.14	0.2	0.2	37.9	0.2	4.14	0.2	-0.27
12/13/2004	7	5	17,234.1	60.	4.14	0.2	0.2	38.57	0.2	4.14	0.2	21.43

Interval Data Dec.13,2004

12/13/2004	7	6	17,432.5	60.54	4.14	0.2	0.2	39.08	0.2	4.14	0.2	21.46
12/13/2004	7	7	17,398.5	49.69	4.14	0.2	0.2	38.95	0.2	4.14	0.2	10.74
12/13/2004	7	8	17,505.6	48.83	4.14	0.2	0.2	39.24	0.2	4.14	0.2	9.59
12/13/2004	7	9	17,721.4	50.45	4.14	0.2	0.2	39.92	0.2	4.14	0.2	10.53
12/13/2004	7	10	17,907.5	50.45	4.14	0.2	0.2	40.43	0.2	4.14	0.2	10.02
12/13/2004	7	11	18,095.5	55.5	4.14	0.2	0.2	48.83	0.2	7.07	0.2	6.67
12/13/2004	7	12	18,218.2	60.	4.14	0.2	0.2	50.	0.2	7.07	0.2	10
12/13/2004	8	1	17,985.	26.61	4.16	0.2	0.2	37.44	0.2	4.16	0.2	-10.83
12/13/2004	8	2	18,193.3	33.5	4.16	0.2	0.2	37.93	0.2	4.16	0.2	-4.43
12/13/2004	8	3	18,285.3	38.19	4.16	0.2	0.2	38.09	0.2	4.16	0.2	0.1
12/13/2004	8	4	18,553.2	70.19	4.16	0.2	0.2	38.95	0.2	4.16	0.2	31.24
12/13/2004	8	5	18,782.1	70.19	4.16	0.2	0.2	39.81	0.2	4.16	0.2	30.38
12/13/2004	8	6	19,018.	70.19	4.16	0.2	0.2	47.77	0.2	4.32	0.2	22.42
12/13/2004	8	7	19,225.5	85.19	4.16	0.2	0.2	51.63	0.2	4.32	0.2	33.56
12/13/2004	8	8	19,286.8	85.19	4.32	0.2	0.2	52.92	0.2	4.32	0.2	32.27
12/13/2004	8	9	19,369.1	85.19	6.33	0.2	0.2	54.38	0.2	4.32	0.2	30.81
12/13/2004	8	10	19,435.8	70.19	6.82	0.2	0.2	54.83	0.2	4.32	0.2	15.36
12/13/2004	8	11	19,443.1	70.19	6.82	0.2	0.2	54.82	0.2	4.32	0.2	15.37
12/13/2004	8	12	19,464.4	85.19	6.82	0.2	0.2	54.71	0.2	4.32	0.2	30.48
12/13/2004	9	1	20,038.5	54.25	4.32	0.2	0.2	54.08	0.2	4.03	0.2	0.17
12/13/2004	9	2	20,104.9	55.06	4.32	0.2	0.2	54.3	0.2	4.03	0.2	0.76
12/13/2004	9	3	20,035.5	54.3	4.32	0.2	0.2	53.61	0.2	4.03	0.2	0.69
12/13/2004	9	4	19,996.7	53.59	4.32	0.2	0.2	53.59	0.2	4.03	0.2	0
12/13/2004	9	5	20,035.7	54.25	4.32	0.2	0.2	53.84	0.2	4.03	0.2	0.41
12/13/2004	9	6	19,984.7	50.45	4.03	0.2	0.2	53.49	0.2	4.03	0.2	-3.04
12/13/2004	9	7	19,960.8	50.45	4.03	0.2	0.2	53.16	0.2	4.03	0.2	-2.71
12/13/2004	9	8	20,006.	53.59	4.03	0.2	0.2	53.59	0.2	4.03	0.2	0
12/13/2004	9	9	19,993.4	52.92	4.03	0.2	0.2	53.59	0.2	4.03	0.2	-0.67
12/13/2004	9	10	20,024.9	53.16	4.03	0.2	0.2	53.72	0.2	4.03	0.2	-0.56
12/13/2004	9	11	20,014.7	53.16	4.03	0.2	0.2	53.59	0.2	4.03	0.2	-0.43
12/13/2004	9	12	20,075.8	54.08	4.03	0.2	0.2	54.18	0.2	4.03	0.2	-0.1
12/13/2004	10	1	19,867.4	34.03	0.22	0.22	0.22	49.59	0.22	0.22	0.22	-15.56
12/13/2004	10	2	19,919.3	51.74	0.22	0.22	0.22	50.45	0.22	0.22	0.22	1.29
12/13/2004	10	3	19,954.2	51.74	0.22	0.22	0.22	51.31	0.22	0.22	0.22	0.43
12/13/2004	10	4	19,930.3	51.31	0.22	0.22	0.22	50.88	0.22	0.22	0.22	0.43
12/13/2004	10	5	19,975.1	52.32	0.22	0.22	0.22	51.31	0.22	0.22	0.22	1.01
12/13/2004	10	6	20,016.4	52.6	0.22	0.22	0.22	52.17	0.22	0.22	0.22	0.43
12/13/2004	10	7	19,938.1	40.91	0.22	0.22	0.22	52.43	0.22	0.22	0.22	-11.52
12/13/2004	10	8	19,970.7	51.74	0.22	0.22	0.22	52.6	0.22	0.22	0.22	-0.86
12/13/2004	10	9	19,988.9	54.83	0.22	0.22	0.22	52.78	0.22	0.22	0.22	2.05
12/13/2004	10	10	20,023.2	53.85	0.22	0.22	0.22	53.03	0.22	0.22	0.22	0.82
12/13/2004	10	11	20,009.1	54.83	0.22	0.22	0.22	52.89	0.22	0.22	0.22	1.94

Interval Data Dec.13,2004

12/13/2004	10	12	20,090.	40.94	0.22	0.22	0.22	52.78	0.22	0.22	0.22	-11.84
12/13/2004	11	1	20,197.9	52.53	4.03	0.21	0.21	53.79	0.21	4.03	0.21	-1.26
12/13/2004	11	2	20,199.	52.53	4.03	0.21	0.21	53.79	0.21	4.03	0.21	-1.26
12/13/2004	11	3	20,233.8	92.11	4.03	0.32	0.32	53.96	0.21	4.03	0.21	38.15
12/13/2004	11	4	20,167.6	70.22	4.03	0.23	0.23	53.68	0.21	4.03	0.21	16.54
12/13/2004	11	5	20,200.9	70.22	4.03	0.23	0.23	53.86	0.21	4.03	0.21	16.36
12/13/2004	11	6	20,257.	70.21	4.03	0.22	0.22	54.83	0.21	4.32	0.21	15.38
12/13/2004	11	7	20,271.1	54.52	4.32	0.21	0.21	54.83	0.21	4.32	0.21	-0.31
12/13/2004	11	8	20,195.4	54.63	4.32	0.21	0.21	53.84	0.21	4.03	0.21	0.79
12/13/2004	11	9	20,182.4	54.29	4.32	0.21	0.21	53.75	0.21	4.03	0.21	0.54
12/13/2004	11	10	20,284.6	54.83	4.03	0.21	0.21	54.62	0.21	4.32	0.21	0.21
12/13/2004	11	11	20,203.7	53.33	4.03	0.21	0.21	54.07	0.23	4.32	0.23	-0.74
12/13/2004	11	12	20,269.7	54.1	4.32	0.21	0.21	54.51	0.23	4.32	0.23	-0.41
12/13/2004	12	1	20,169.2	53.6	4.32	0.23	0.23	53.5	0.23	4.32	0.23	0.1
12/13/2004	12	2	20,158.9	53.49	4.32	0.23	0.23	53.39	0.23	4.32	0.23	0.1
12/13/2004	12	3	20,084.6	39.61	4.03	0.23	0.23	53.17	0.23	4.1	0.23	-13.56
12/13/2004	12	4	20,078.3	40.41	4.03	0.23	0.23	53.17	0.23	4.1	0.23	-12.76
12/13/2004	12	5	20,181.3	53.27	4.03	0.23	0.23	53.6	0.21	4.32	0.21	-0.33
12/13/2004	12	6	20,174.1	53.17	4.1	0.23	0.23	53.5	0.21	4.32	0.21	-0.33
12/13/2004	12	7	20,146.6	52.87	4.03	0.21	0.21	53.42	0.21	4.32	0.21	-0.55
12/13/2004	12	8	20,188.4	53.17	4.1	0.21	0.21	53.84	0.21	4.32	0.21	-0.67
12/13/2004	12	9	20,186.3	53.21	4.14	0.21	0.21	53.82	0.21	4.32	0.21	-0.61
12/13/2004	12	10	20,214.4	53.5	4.32	0.21	0.21	53.95	0.21	4.32	0.21	-0.45
12/13/2004	12	11	20,207.2	53.39	4.32	0.21	0.21	53.84	0.21	4.32	0.21	-0.45
12/13/2004	12	12	20,113.1	40.66	4.03	0.2	0.2	53.71	0.2	4.32	0.2	-13.05
12/13/2004	13	1	19,929.5	52.	0.2	0.2	0.2	52.17	0.2	0.2	0.2	-0.17
12/13/2004	13	2	19,895.4	51.97	0.2	0.2	0.2	52.17	0.2	0.2	0.2	-0.2
12/13/2004	13	3	19,975.4	51.57	0.2	0.2	0.2	52.43	0.2	0.2	0.2	-0.86
12/13/2004	13	4	19,961.2	51.57	0.2	0.2	0.2	52.43	0.2	0.2	0.2	-0.86
12/13/2004	13	5	19,981.3	51.97	0.2	0.2	0.2	52.43	0.2	0.2	0.2	-0.46
12/13/2004	13	6	19,882.3	40.25	0.21	0.21	0.21	52.17	0.21	0.21	0.21	-11.92
12/13/2004	13	7	19,903.3	50.28	0.21	0.21	0.21	52.17	0.21	0.21	0.21	-1.89
12/13/2004	13	8	19,947.3	51.14	0.21	0.21	0.21	52.17	0.21	0.21	0.21	-1.03
12/13/2004	13	9	19,955.2	52.09	0.21	0.21	0.21	52.2	0.21	0.21	0.21	-0.11
12/13/2004	13	10	19,953.3	52.32	0.21	0.21	0.21	52.17	0.21	0.21	0.21	0.15
12/13/2004	13	11	19,976.1	66.67	0.21	0.21	0.21	52.43	0.21	0.21	0.21	14.24
12/13/2004	13	12	19,990.2	51.97	0.21	0.21	0.21	52.86	0.21	0.21	0.21	-0.89
12/13/2004	14	1	19,888.	34.13	0.23	0.23	0.23	52.39	0.23	0.23	0.23	-18.26
12/13/2004	14	2	19,797.	40.09	0.23	0.23	0.23	51.1	0.22	0.22	0.22	-11.01
12/13/2004	14	3	19,769.1	39.81	0.22	0.22	0.22	51.08	0.22	0.22	0.22	-11.27
12/13/2004	14	4	19,772.8	39.91	0.22	0.22	0.22	51.08	0.22	0.22	0.22	-11.17
12/13/2004	14	5	19,865.9	40.38	0.22	0.22	0.22	52.19	0.22	0.22	0.22	-11.81

Interval Data Dec.13,2004

12/13/2004	14	6	19,840.9	40.16	0.22	0.22	0.22	51.96	0.22	0.22	0.22	-11.8
12/13/2004	14	7	19,769.6	39.91	0.22	0.22	0.22	51.08	0.22	0.22	0.22	-11.17
12/13/2004	14	8	19,719.1	39.98	0.22	0.22	0.22	51.08	0.22	0.22	0.22	-11.1
12/13/2004	14	9	19,763.	39.81	0.22	0.22	0.22	51.08	0.22	0.22	0.22	-11.27
12/13/2004	14	10	19,760.	39.81	0.22	0.22	0.22	51.08	0.22	0.22	0.22	-11.27
12/13/2004	14	11	19,789.8	39.98	0.22	0.22	0.22	51.1	0.22	0.22	0.22	-11.12
12/13/2004	14	12	19,801.6	39.81	0.22	0.22	0.22	51.53	0.22	0.22	0.22	-11.72
12/13/2004	15	1	19,516.1	40.09	0.2	0.2	0.2	49.41	0.2	0.2	0.2	-9.32
12/13/2004	15	2	19,492.4	40.09	0.2	0.2	0.2	48.98	0.2	0.2	0.2	-8.89
12/13/2004	15	3	19,459.9	39.34	0.2	0.2	0.2	48.55	0.2	0.2	0.2	-9.21
12/13/2004	15	4	19,494.	39.8	0.2	0.2	0.2	48.98	0.2	0.2	0.2	-9.18
12/13/2004	15	5	19,449.4	39.61	0.2	0.2	0.2	48.12	0.2	0.2	0.2	-8.51
12/13/2004	15	6	19,471.	39.72	0.2	0.2	0.2	48.55	0.2	0.2	0.2	-8.83
12/13/2004	15	7	19,516.	39.81	0.2	0.2	0.2	49.84	0.2	0.2	0.2	-10.03
12/13/2004	15	8	19,504.1	39.8	0.2	0.2	0.2	49.41	0.2	0.2	0.2	-9.61
12/13/2004	15	9	19,541.2	39.98	0.2	0.2	0.2	50.27	0.2	0.2	0.2	-10.29
12/13/2004	15	10	19,517.1	39.81	0.2	0.2	0.2	49.41	0.2	0.2	0.2	-9.6
12/13/2004	15	11	19,504.3	47.69	0.2	0.2	0.2	49.41	0.2	0.2	0.2	-1.72
12/13/2004	15	12	19,545.	48.12	0.2	0.2	0.2	50.27	0.2	0.2	0.2	-2.15
12/13/2004	16	1	19,499.2	27.67	0.3	0.3	0.3	40.08	0.3	0.3	0.3	-12.41
12/13/2004	16	2	19,523.2	33.93	0.3	0.3	0.3	40.16	0.3	0.3	0.3	-6.23
12/13/2004	16	3	19,570.5	39.42	0.3	0.3	0.3	40.37	0.3	0.3	0.3	-0.95
12/13/2004	16	4	19,546.9	39.17	0.3	0.3	0.3	40.37	0.3	0.3	0.3	-1.2
12/13/2004	16	5	19,601.3	39.21	0.3	0.3	0.3	40.66	0.3	0.3	0.3	-1.45
12/13/2004	16	6	19,680.3	39.5	0.3	0.3	0.3	47.72	0.3	0.3	0.3	-8.22
12/13/2004	16	7	19,741.1	39.72	0.3	0.3	0.3	48.57	0.3	0.3	0.3	-8.85
12/13/2004	16	8	19,858.1	47.29	0.3	0.3	0.3	50.87	0.3	0.3	0.3	-3.58
12/13/2004	16	9	19,872.4	40.41	0.3	0.3	0.3	50.87	0.3	0.3	0.3	-10.46
12/13/2004	16	10	19,894.5	40.66	0.3	0.3	0.3	50.87	0.3	0.3	0.3	-10.21
12/13/2004	16	11	20,038.3	66.67	0.3	0.3	0.3	51.95	0.3	0.3	0.3	14.72
12/13/2004	16	12	20,125.4	51.99	0.3	0.3	0.3	52.01	0.3	0.3	0.3	-0.02
12/13/2004	17	1	19,480.6	26.61	0.32	0.32	0.32	39.72	0.32	0.32	0.32	-13.11
12/13/2004	17	2	19,620.6	34.13	0.32	0.32	0.32	40.16	0.32	0.32	0.32	-6.03
12/13/2004	17	3	19,645.2	39.07	0.32	0.32	0.32	40.36	0.32	0.32	0.32	-1.29
12/13/2004	17	4	19,849.5	40.08	0.32	0.32	0.32	48.41	0.32	0.32	0.32	-8.33
12/13/2004	17	5	19,984.4	39.5	0.32	0.32	0.32	50.67	0.32	0.32	0.32	-11.17
12/13/2004	17	6	20,107.3	39.66	0.32	0.32	0.32	51.41	0.32	0.32	0.32	-11.75
12/13/2004	17	7	20,307.5	80.31	0.32	0.32	0.32	51.84	0.32	0.32	0.32	28.47
12/13/2004	17	8	20,388.2	51.9	0.32	0.32	0.32	51.89	0.32	0.32	0.32	0.01
12/13/2004	17	9	20,552.6	80.31	0.32	0.32	0.32	53.13	0.32	0.32	0.32	27.18
12/13/2004	17	10	20,752.	85.53	0.54	0.54	0.54	54.56	0.32	0.32	0.32	30.97
12/13/2004	17	11	20,873.4	85.53	0.54	0.54	0.54	80.31	0.32	0.32	0.32	5.22

Interval Data Dec.13,2004

12/13/2004	17	12	21,053.4	111.25	4.32	4.32	4.32	85.54	0.54	0.54	0.54	25.71
12/13/2004	18	1	21,212.1	83.47	30.	30.	30.	83.47	30.	30.	30.	0
12/13/2004	18	2	21,371.1	114.99	30.	30.	30.	87.72	30.	30.	30.	27.27
12/13/2004	18	3	21,515.	83.47	30.	30.	30.	89.	30.	30.	30.	-5.53
12/13/2004	18	4	21,648.8	129.69	30.	30.	30.	92.11	30.	30.	30.	37.58
12/13/2004	18	5	21,753.1	137.03	30.	30.	30.	109.99	30.	30.	30.	27.04
12/13/2004	18	6	21,902.8	150.09	30.1	30.1	30.	155.61	40.63	40.63	40.53	-5.52
12/13/2004	18	7	21,967.	150.09	30.1	30.1	30.	159.41	39.42	39.42	39.32	-9.32
12/13/2004	18	8	21,990.8	153.46	30.1	30.1	30.	123.69	30.	30.	30.	29.77
12/13/2004	18	9	21,985.3	150.09	30.1	30.1	30.	122.8	30.	30.	30.	27.29
12/13/2004	18	10	21,909.2	140.07	30.08	30.08	30.	152.16	42.17	42.17	42.07	-12.09
12/13/2004	18	11	21,952.9	140.07	30.08	30.08	30.	150.09	30.1	30.1	30.	-10.02
12/13/2004	18	12	21,910.6	137.03	30.	30.	30.	120.28	28.54	28.54	28.54	16.75
12/13/2004	19	1	21,667.5	122.8	30.	30.	30.	108.	30.	30.	30.	14.8
12/13/2004	19	2	21,711.3	122.9	30.	30.	30.	108.84	30.	30.	30.	14.06
12/13/2004	19	3	21,729.7	123.69	30.	30.	30.	109.99	30.	30.	30.	13.7
12/13/2004	19	4	21,672.8	121.79	30.	30.	30.	108.	30.	30.	30.	13.79
12/13/2004	19	5	21,543.7	108.84	30.	30.	30.	89.	30.	30.	30.	19.84
12/13/2004	19	6	21,453.2	80.13	30.	30.	30.	87.89	30.	30.	30.	-7.76
12/13/2004	19	7	21,483.5	107.14	30.	30.	30.	89.	30.	30.	30.	18.14
12/13/2004	19	8	21,542.3	108.84	30.	30.	30.	89.	30.	30.	30.	19.84
12/13/2004	19	9	21,519.1	108.	30.	30.	30.	89.	30.	30.	30.	19
12/13/2004	19	10	21,524.1	108.	30.	30.	30.	89.	30.	30.	30.	19
12/13/2004	19	11	21,525.1	108.24	30.	30.	30.	89.	30.	30.	30.	19.24
12/13/2004	19	12	21,479.1	89.	30.	30.	30.	89.	30.	30.	30.	0
12/13/2004	20	1	21,391.5	121.96	19.27	19.27	19.27	106.93	16.94	16.94	16.94	15.03
12/13/2004	20	2	21,337.1	110.75	17.85	17.85	17.85	104.05	16.35	16.35	16.35	6.7
12/13/2004	20	3	21,402.9	106.93	16.94	16.94	16.94	106.94	16.94	16.94	16.94	-0.01
12/13/2004	20	4	21,328.7	103.94	16.25	16.25	16.25	103.94	16.25	16.25	16.25	0
12/13/2004	20	5	21,272.4	100.28	15.29	15.29	15.29	101.24	16.25	16.25	16.25	-0.96
12/13/2004	20	6	21,186.9	93.13	8.14	8.14	8.14	93.13	8.14	8.14	8.14	0
12/13/2004	20	7	21,148.8	92.11	8.14	8.14	8.14	93.13	8.14	8.14	8.14	-1.02
12/13/2004	20	8	21,121.2	89.08	8.14	8.14	8.14	91.89	8.14	8.14	8.14	-2.81
12/13/2004	20	9	21,120.7	93.13	8.14	8.14	8.14	92.11	8.14	8.14	8.14	1.02
12/13/2004	20	10	21,072.1	89.08	7.24	7.24	7.24	89.	8.14	8.14	8.14	0.08
12/13/2004	20	11	21,049.9	88.13	8.14	8.14	8.14	89.	8.14	8.14	8.14	-0.87
12/13/2004	20	12	21,016.	89.	8.14	8.14	8.14	89.	8.14	8.14	8.14	0
12/13/2004	21	1	21,020.4	94.02	4.03	4.03	4.03	89.	0.59	0.59	0.59	5.02
12/13/2004	21	2	20,904.	85.54	0.54	0.54	0.54	87.89	0.59	0.59	0.59	-2.35
12/13/2004	21	3	20,891.3	85.54	0.54	0.54	0.54	89.	0.59	0.59	0.59	-3.46
12/13/2004	21	4	20,863.1	85.53	0.54	0.54	0.54	88.28	0.59	0.59	0.59	-2.75
12/13/2004	21	5	20,896.1	89.08	0.59	0.59	0.59	89.	0.59	0.59	0.59	0.08

Interval Data Dec.13,2004

12/13/2004	21	6	20,866.	88.28	0.59	0.59	0.59	88.28	0.59	0.59	0.59	0
12/13/2004	21	7	20,815.	85.58	0.59	0.59	0.59	87.89	0.59	0.59	0.59	-2.31
12/13/2004	21	8	20,794.1	87.72	0.59	0.59	0.59	87.89	0.59	0.59	0.59	-0.17
12/13/2004	21	9	20,773.9	85.58	0.59	0.59	0.59	87.89	0.59	0.59	0.59	-2.31
12/13/2004	21	10	20,654.	85.48	0.49	0.49	0.49	87.72	0.59	0.59	0.59	-2.24
12/13/2004	21	11	20,665.8	85.48	0.49	0.49	0.49	87.72	0.59	0.59	0.59	-2.24
12/13/2004	21	12	20,599.7	80.31	0.32	0.32	0.32	87.72	0.59	0.59	0.59	-7.41
12/13/2004	22	1	20,493.	94.	0.23	0.23	0.23	94.	0.23	0.23	0.23	0
12/13/2004	22	2	20,319.5	90.21	0.22	0.22	0.22	90.21	0.22	0.22	0.22	0
12/13/2004	22	3	20,363.4	90.22	0.23	0.23	0.23	90.22	0.23	0.23	0.23	0
12/13/2004	22	4	20,314.	90.22	0.23	0.23	0.23	90.21	0.22	0.22	0.22	0.01
12/13/2004	22	5	20,232.2	90.15	0.22	0.22	0.22	89.	0.22	0.22	0.22	1.15
12/13/2004	22	6	20,227.1	90.21	0.22	0.22	0.22	89.	0.22	0.22	0.22	1.21
12/13/2004	22	7	20,139.4	85.21	0.21	0.21	0.21	87.89	0.22	0.22	0.22	-2.68
12/13/2004	22	8	20,048.5	85.2	0.21	0.21	0.21	87.89	0.22	0.22	0.22	-2.69
12/13/2004	22	9	19,872.1	80.19	0.2	0.2	0.2	87.72	0.22	0.22	0.22	-7.53
12/13/2004	22	10	19,741.7	68.56	0.2	0.2	0.2	87.72	0.22	0.22	0.22	-19.16
12/13/2004	22	11	19,633.4	51.88	0.2	0.2	0.2	85.19	0.2	0.2	0.2	-33.31
12/13/2004	22	12	19,541.5	68.56	0.2	0.2	0.2	80.19	0.2	0.2	0.2	-11.63
Average Daily				58.55337				57.2236				

Hourly Data

ATTENTION:

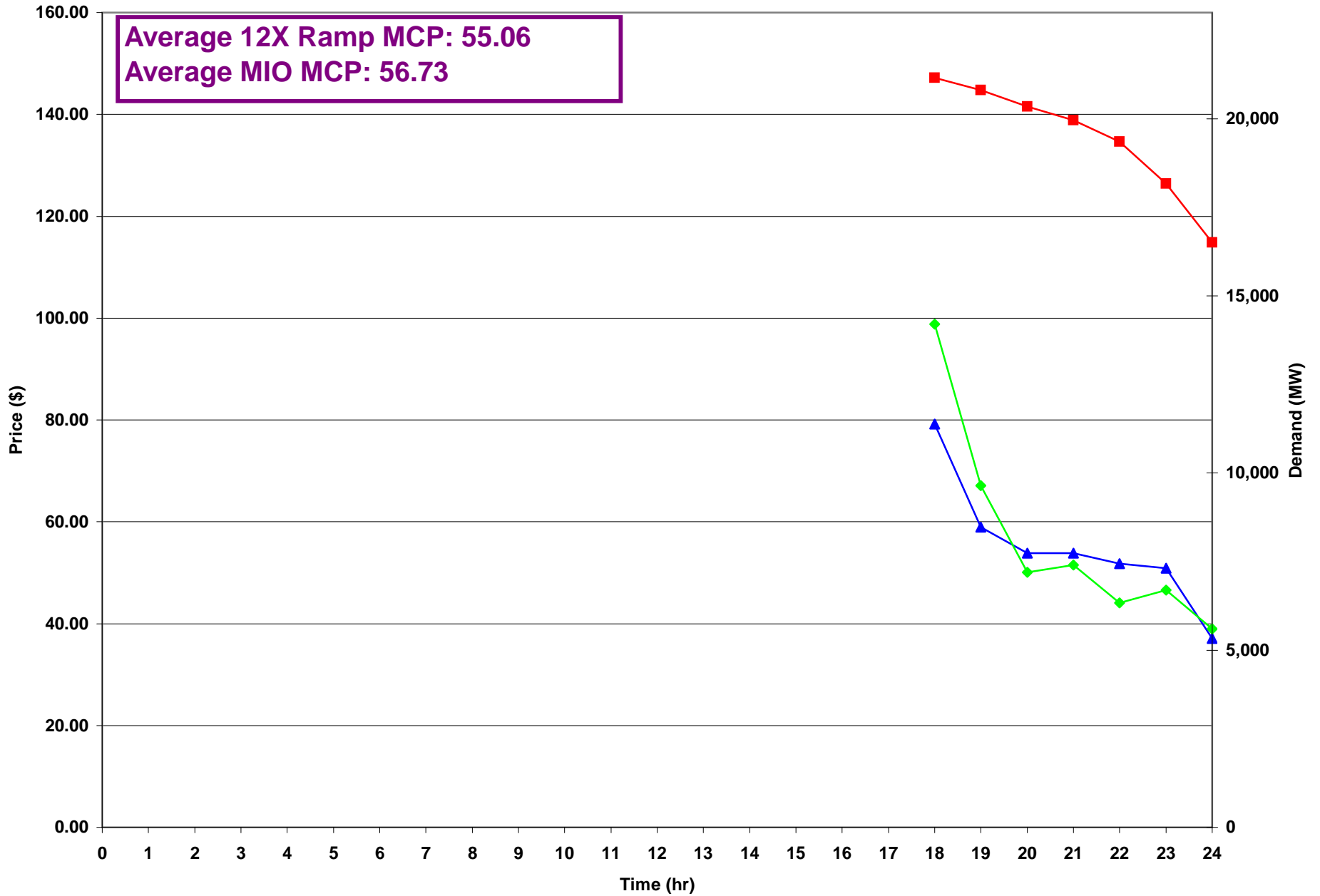
The following draft data is provided for informational purposes and general use to members of the IMO Market Pricing Working Group and their representatives. While the IMO has attempted to ensure the accuracy of the information, no warranty is expressed or implied as to the accuracy, adequacy or completeness of the draft data. Recipients of the draft data agree not to misuse or misrepresent the draft data or to use it for commercial purposes.

Date	Hour	Average RTU Demand	Average 12X Ramp MCP	Average MIO MCP
12/10/2004	18	21,156	79.15	98.80
12/10/2004	19	20,815	58.90	67.07
12/10/2004	20	20,348	53.87	50.08
12/10/2004	21	19,962	53.81	51.51
12/10/2004	22	19,356	51.74	44.05
12/10/2004	23	18,170	50.89	46.61
12/10/2004	24	16,511	37.06	39.01
12/11/2004	1	15,744	36.31	36.18
12/11/2004	2	15,233	34.90	34.87
12/11/2004	3	14,723	33.73	33.56
12/11/2004	4	14,576	33.22	33.04
12/11/2004	5	14,388	31.58	31.30
12/11/2004	6	14,584	32.47	32.85
12/11/2004	7	15,461	35.18	37.74
12/11/2004	8	16,183	34.17	35.64
12/11/2004	9	17,038	37.64	42.76
12/11/2004	10	17,038	38.62	38.78
12/11/2004	11	17,447	38.88	36.73
12/11/2004	12	17,918	40.19	40.18
12/11/2004	13	17,723	39.33	37.22
12/11/2004	14	17,545	38.55	37.01
12/11/2004	15	17,524	38.43	37.66
12/11/2004	16	17,267	37.61	35.83
12/11/2004	17	17,798	34.47	35.46
12/11/2004	18	18,897	40.41	41.87
12/11/2004	19	19,273	56.12	57.88
12/11/2004	20	19,183	59.17	59.75
12/11/2004	21	18,452	57.50	48.79
12/11/2004	22	17,808	49.50	42.07
12/11/2004	23	16,796	40.95	38.84
12/12/2004	13	17,788	40.75	40.25
12/12/2004	14	17,852	57.72	55.06
12/12/2004	15	18,053	70.21	70.50
12/12/2004	16	18,334	52.67	50.13
12/12/2004	17	18,763	50.05	53.98
12/12/2004	18	19,883	56.47	82.37
12/12/2004	19	20,175	64.10	70.08

Hourly Data

12/12/2004	20	19,914	68.34	66.48
12/12/2004	21	19,544	60.25	59.23
12/12/2004	22	18,478	52.87	49.55
12/12/2004	23	17,607	48.00	42.80
12/12/2004	24	16,649	39.50	38.82
12/13/2004	1	15,476	36.85	36.63
12/13/2004	2	15,043	36.02	36.86
12/13/2004	3	14,887	35.45	35.42
12/13/2004	4	14,835	35.26	35.19
12/13/2004	5	15,093	35.40	36.55
12/13/2004	6	15,941	36.98	40.18
12/13/2004	7	17,381	40.39	47.00
12/13/2004	8	18,920	46.94	65.83
12/13/2004	9	20,023	53.73	53.27
12/13/2004	10	19,974	51.85	49.24
12/13/2004	11	20,222	54.13	61.13
12/13/2004	12	20,159	53.58	50.03
12/13/2004	13	19,946	52.32	51.98
12/13/2004	14	19,795	51.40	39.48
12/13/2004	15	19,501	49.27	41.16
12/13/2004	16	19,746	46.21	42.14
12/13/2004	17	20,218	54.00	59.49
12/13/2004	18	20,815	120.53	130.80
12/13/2004	19	21,571	95.48	109.11
12/13/2004	20	21,204	96.70	98.13
12/13/2004	21	20,812	88.19	86.51
12/13/2004	22	20,077	88.27	82.05

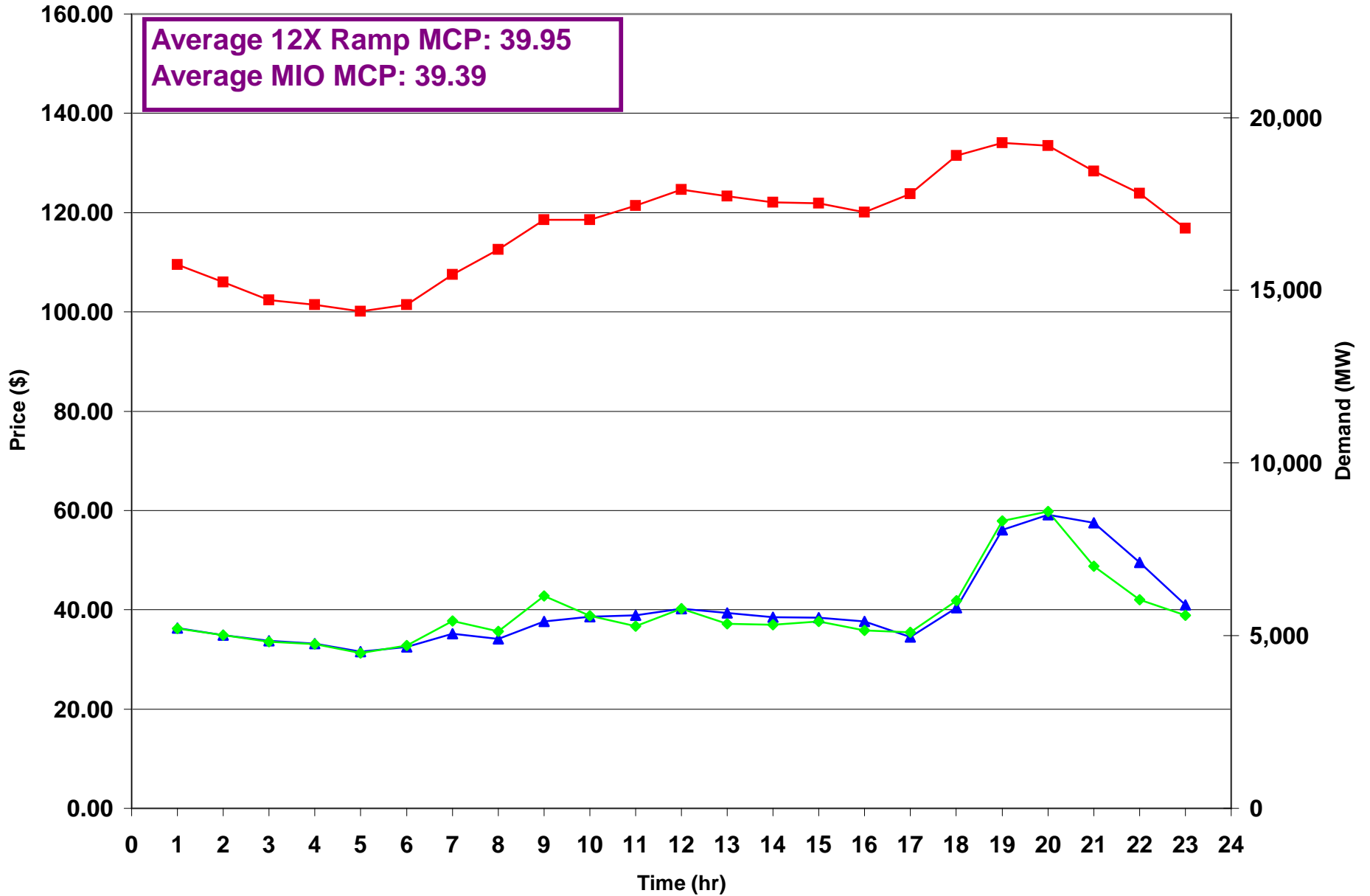
Dec10,2004



▲ 12X Ramp MCP ◆ MIO MCP ■ RTU DEMAND

Public

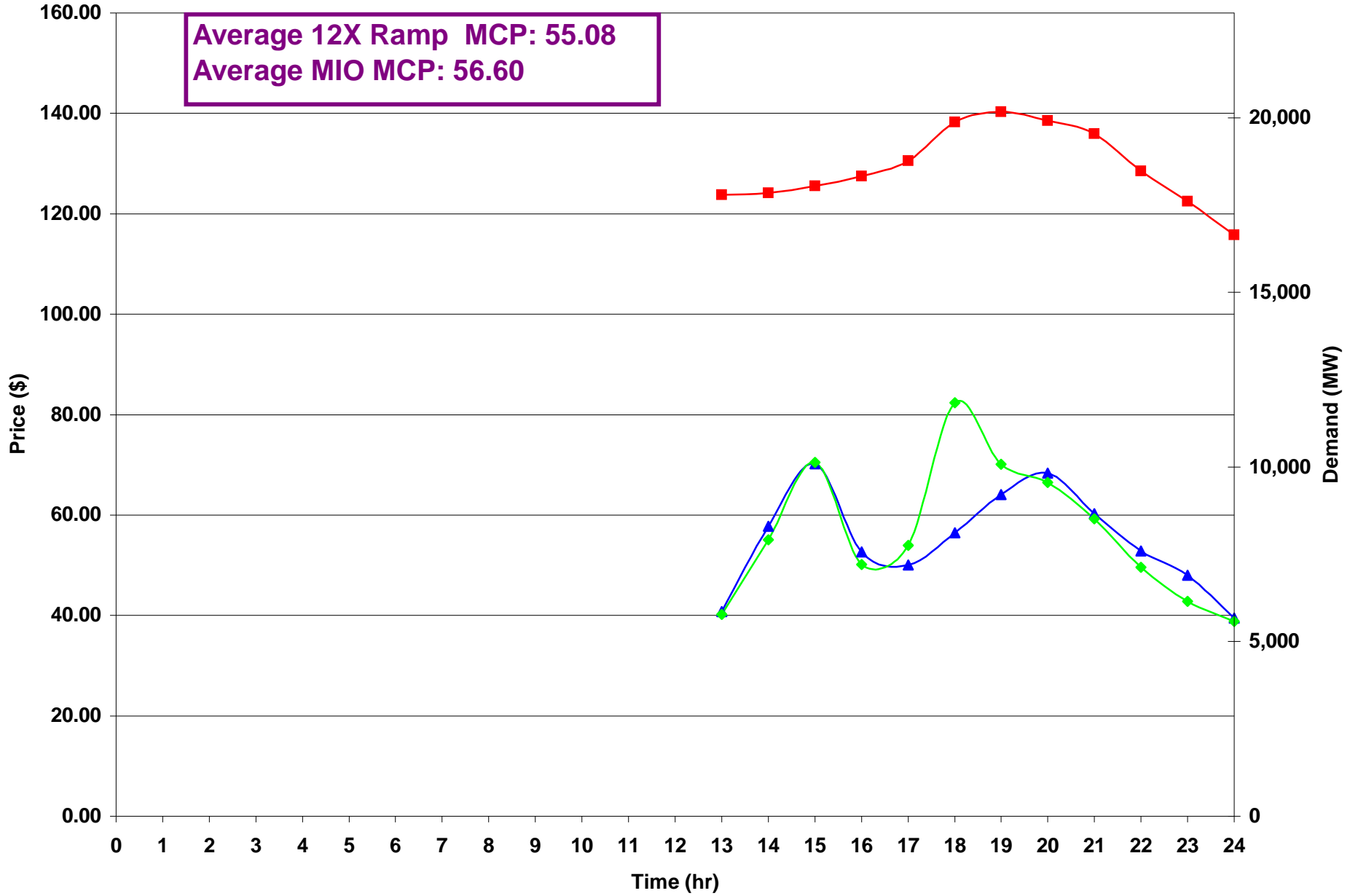
Dec11,2004



▲ 12X Ramp MCP ◆ MIO MCP ■ RTU Demand

Public

Dec12,2004

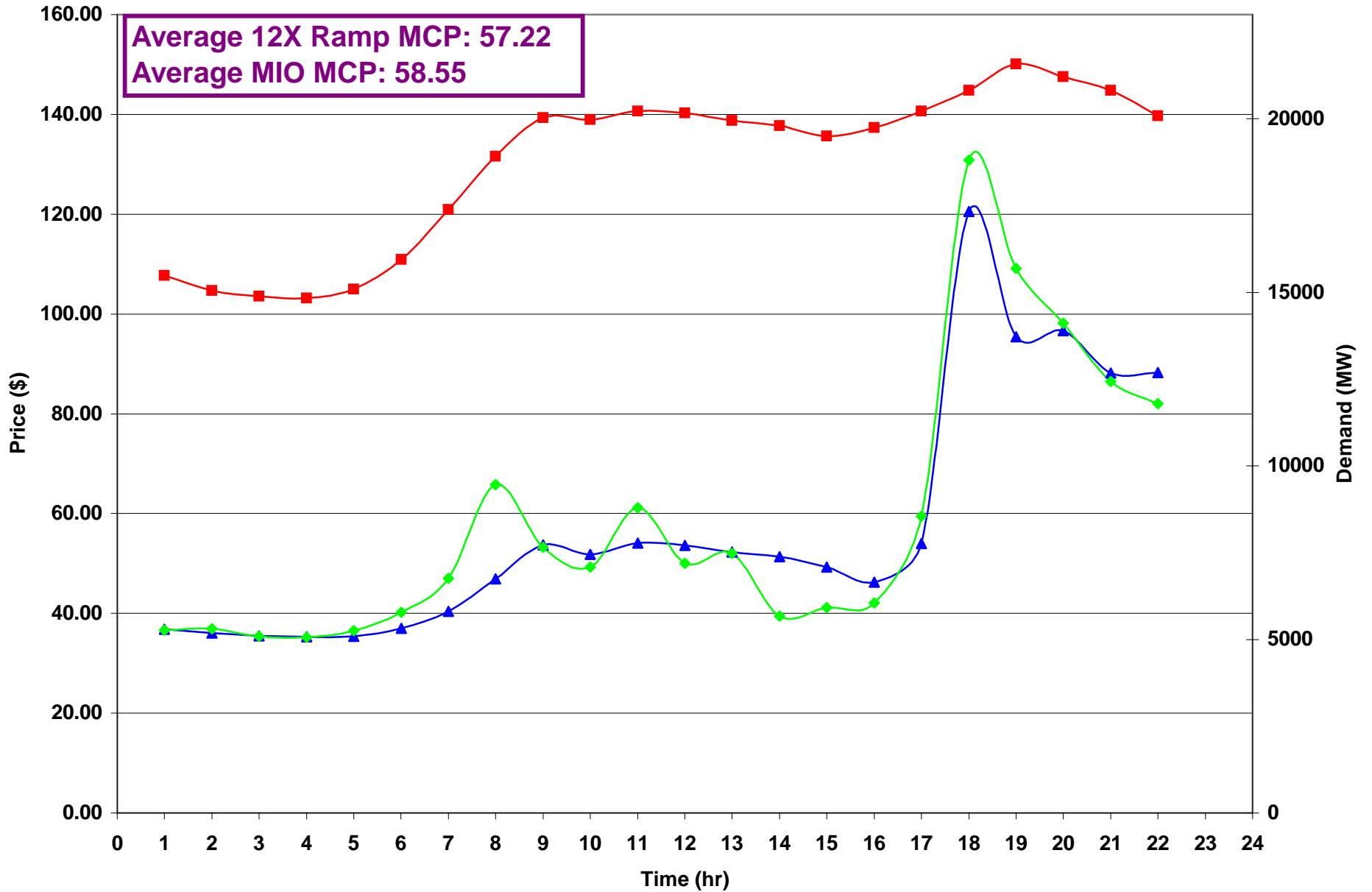


Average 12X Ramp MCP: 55.08
Average MIO MCP: 56.60

12X Ramp MCP MIO MCP RTU Demand

Public

Dec13,2004



▲ 12X Ramp MCP ◆ MIO MCP ■ RTU DEMAND

Public