

Report on Operations – Summer/09 to Stakeholder Advisory Committee

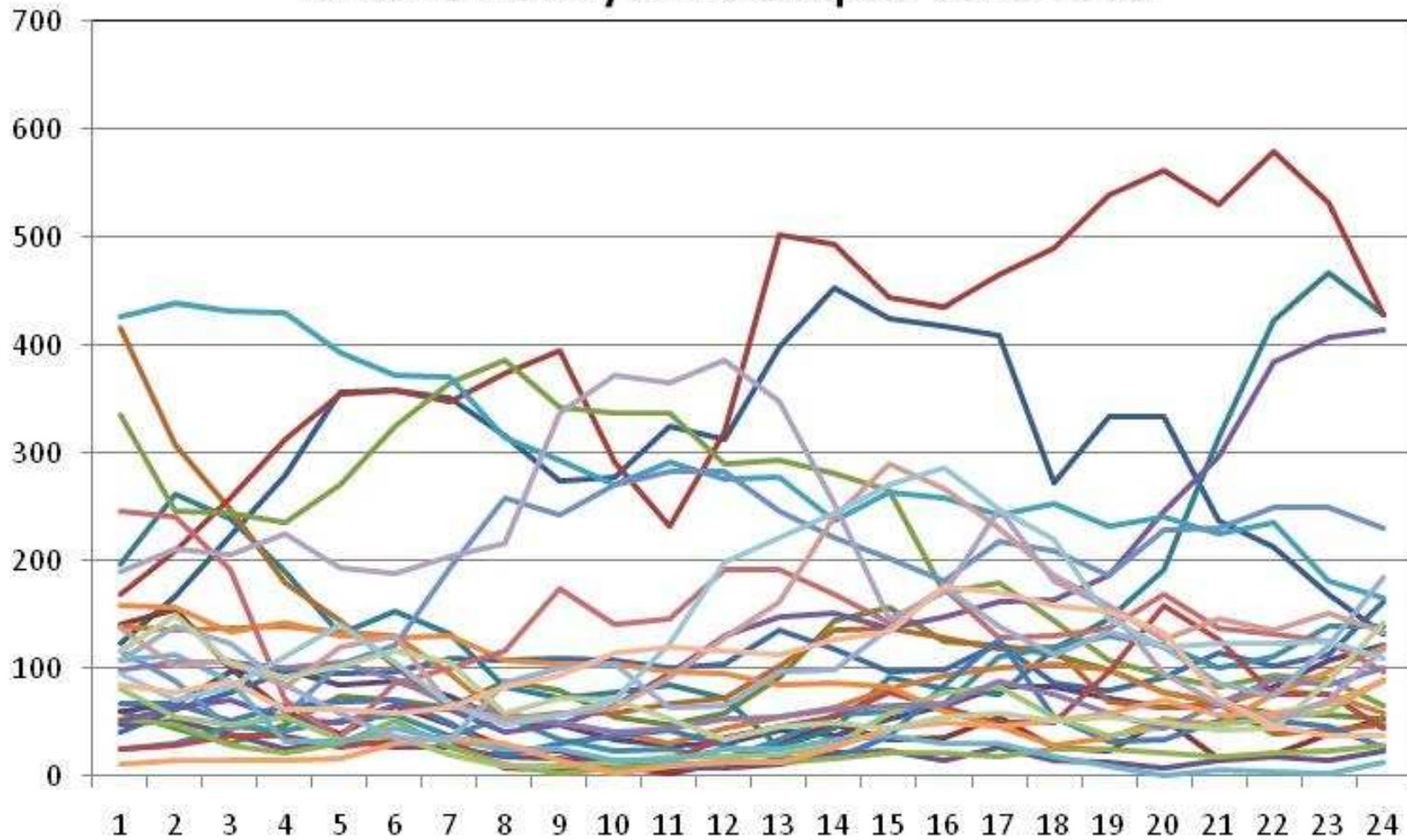
Ken Kozlik
October 28, 2009



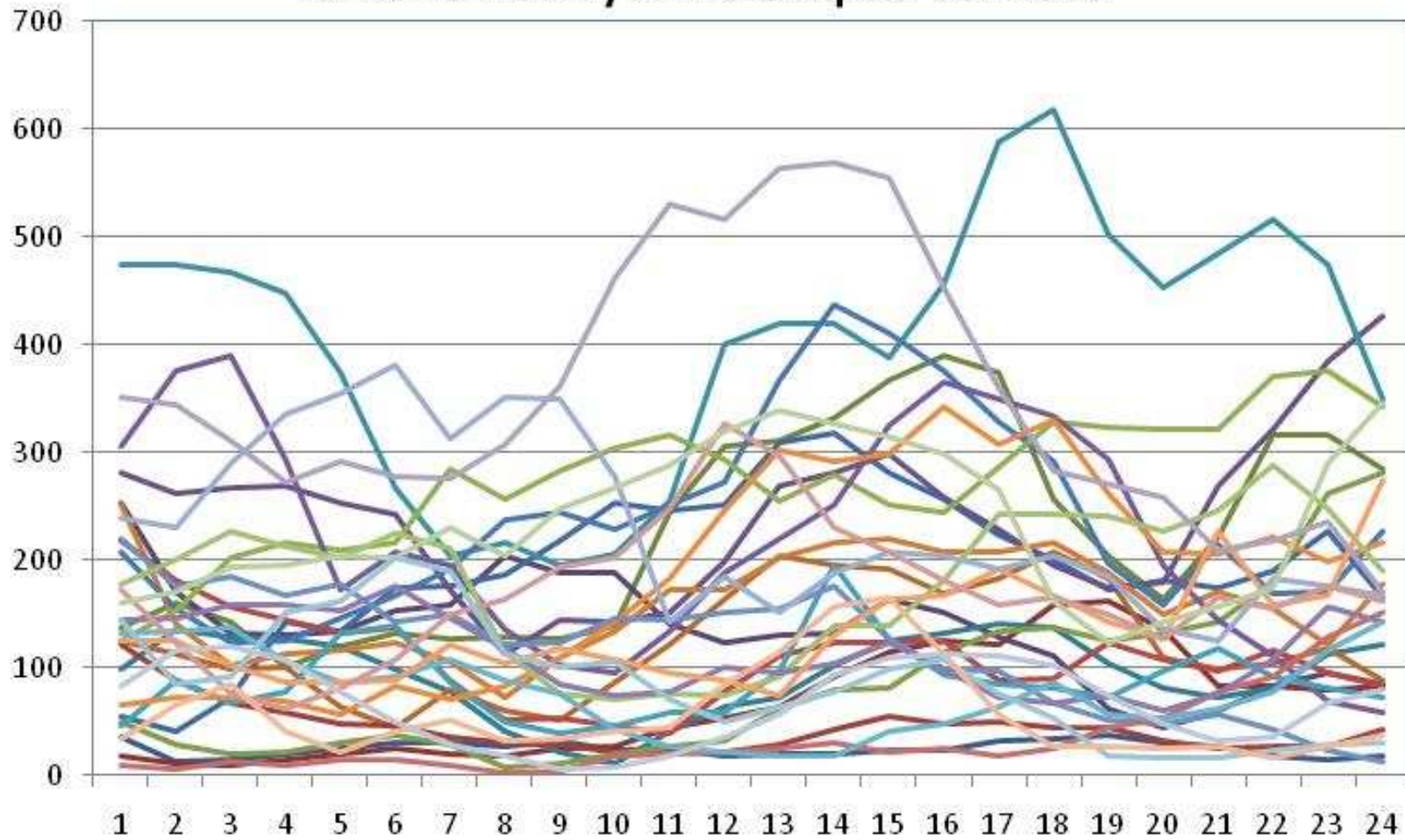
- Supply side
- Demand side
 - The result
- Significant Operating Events

- Wolfe Island EcoPower Centre
 - Declared in service, June 26, 2009
 - 197.6 MW installed capacity
 - Second largest wind farm in Canada
 - Raises wind generation total on the grid to 1,080 MW
- We now have over 8,500 MW of gas-fired generation on the system
 - 85 MW currently commissioning
 - 1500 MW of which is in first year of operation

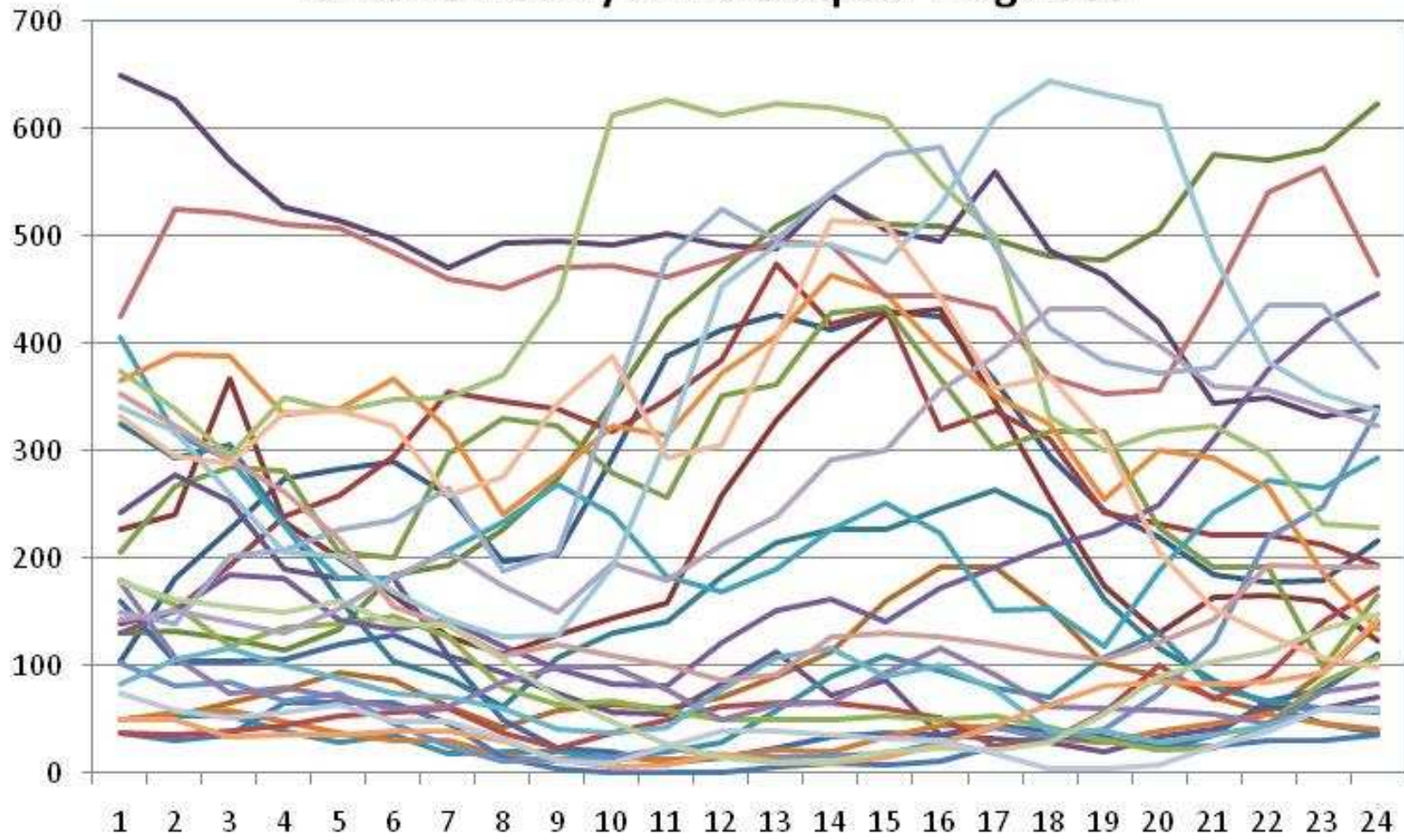
Ontario Hourly Wind Output: June 2009



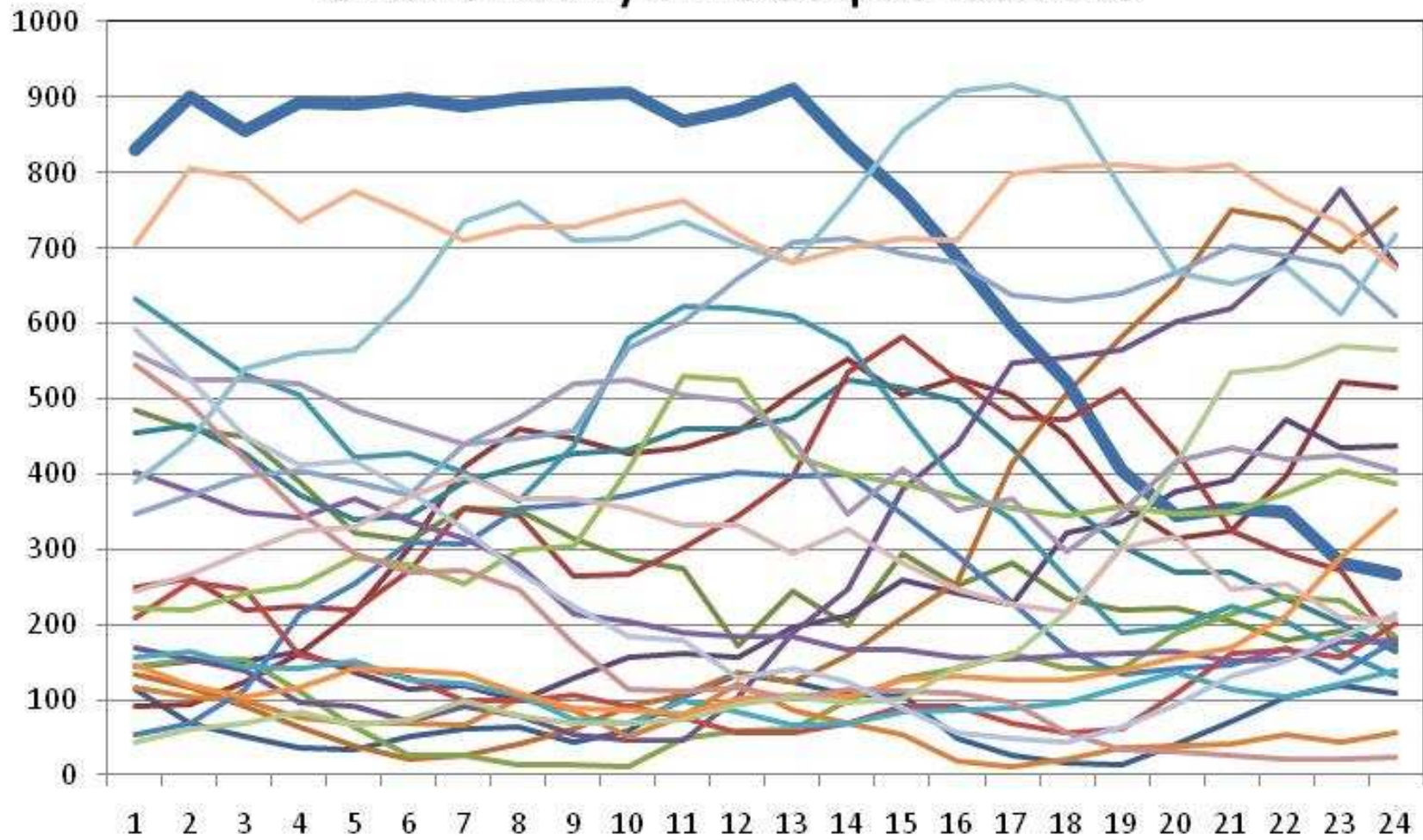
Ontario Hourly Wind Output: Jul 2009



Ontario Hourly Wind Output: Aug 2009

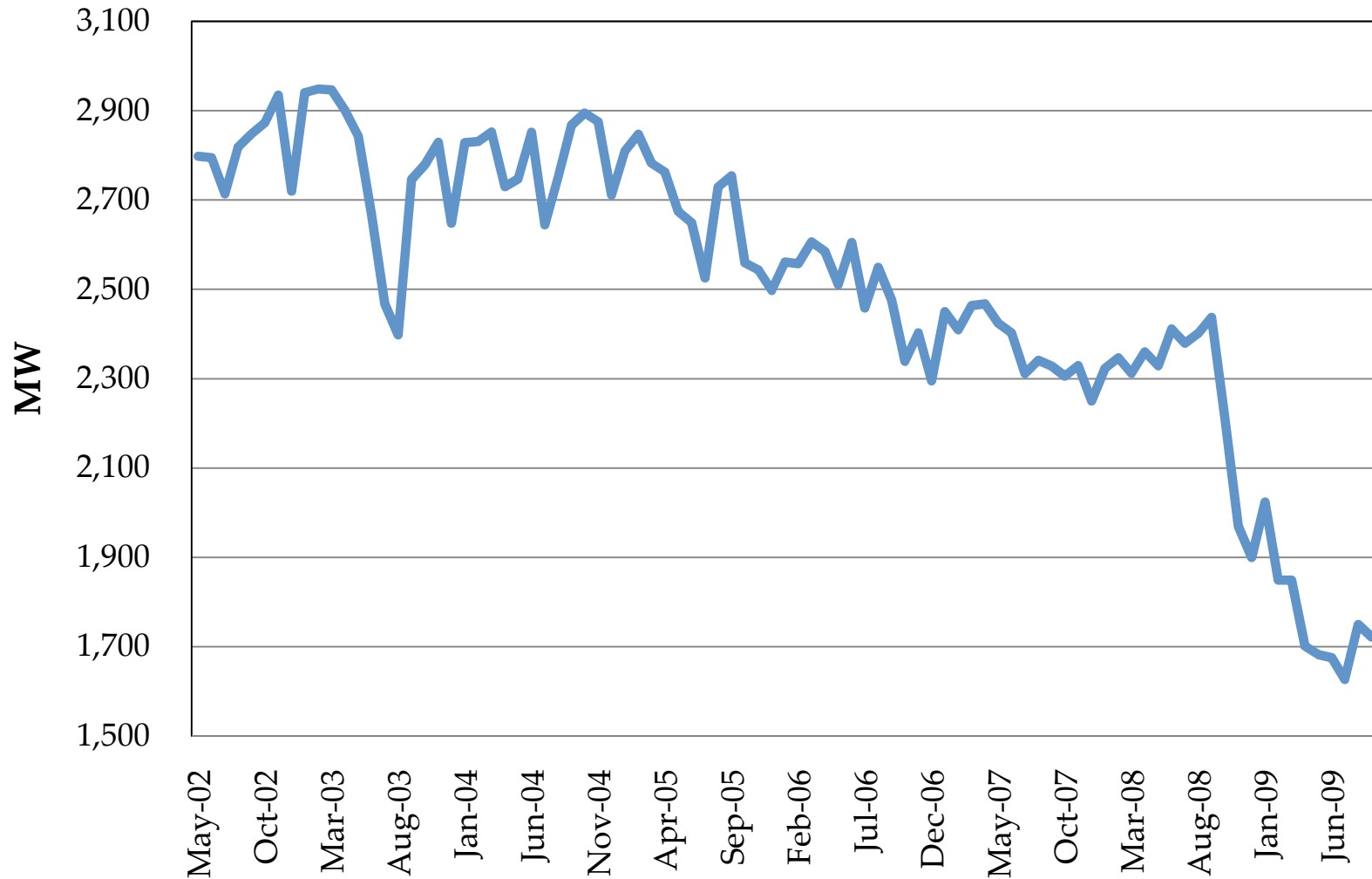


Ontario Hourly Wind Output: Oct 2009



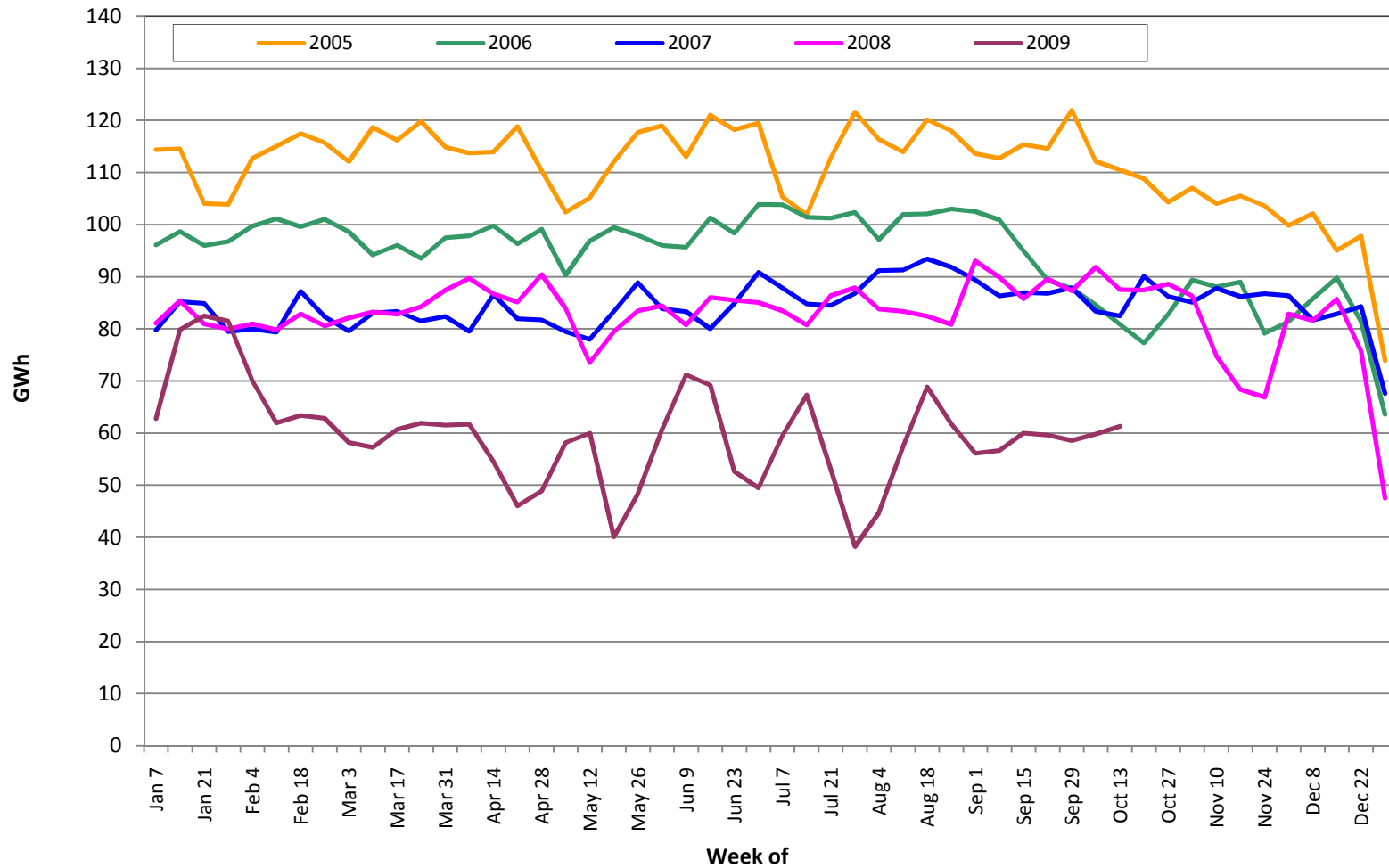
Wholesale Industrial Demand

Total - Wholesale Average Hourly Demand



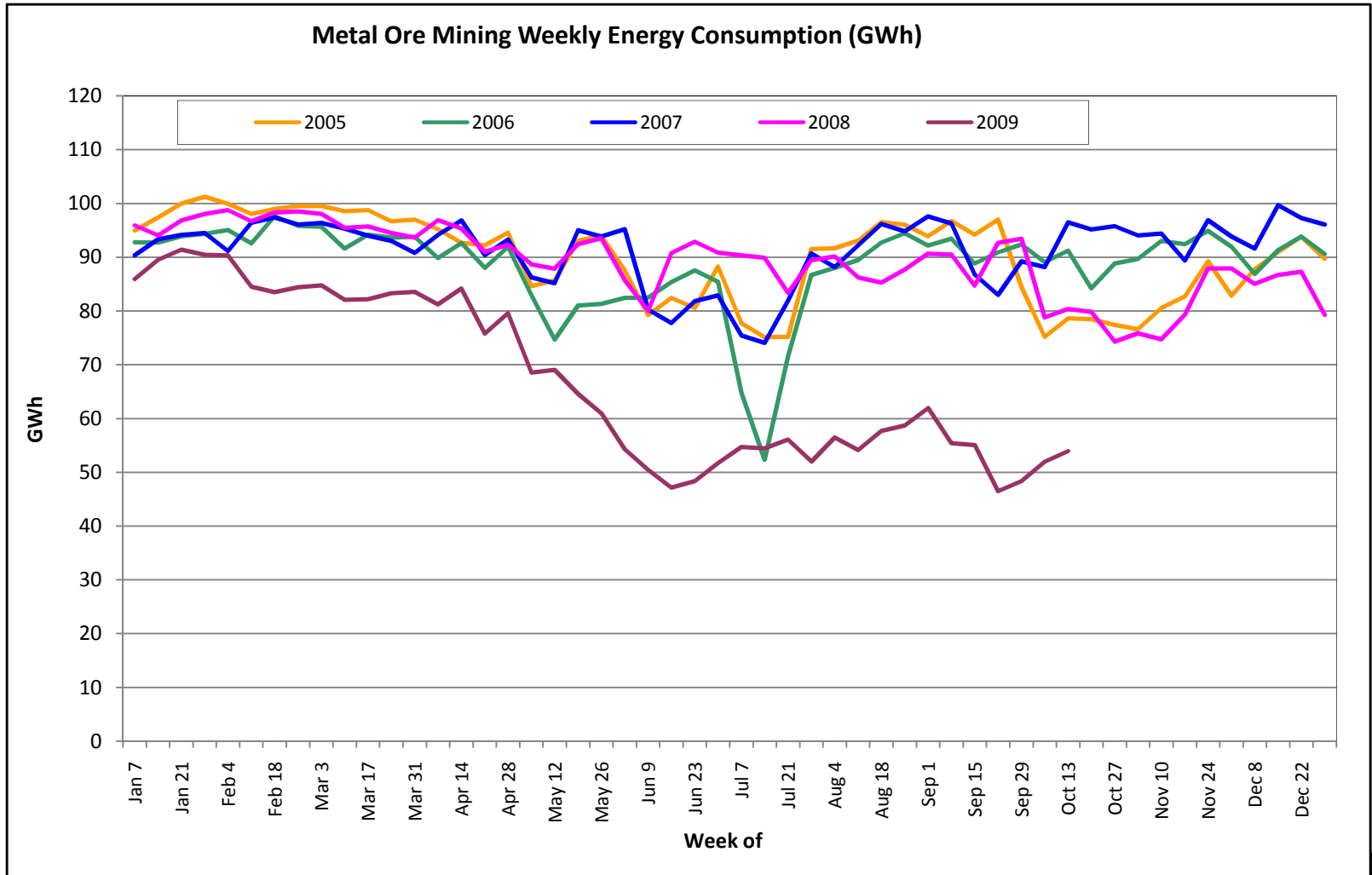


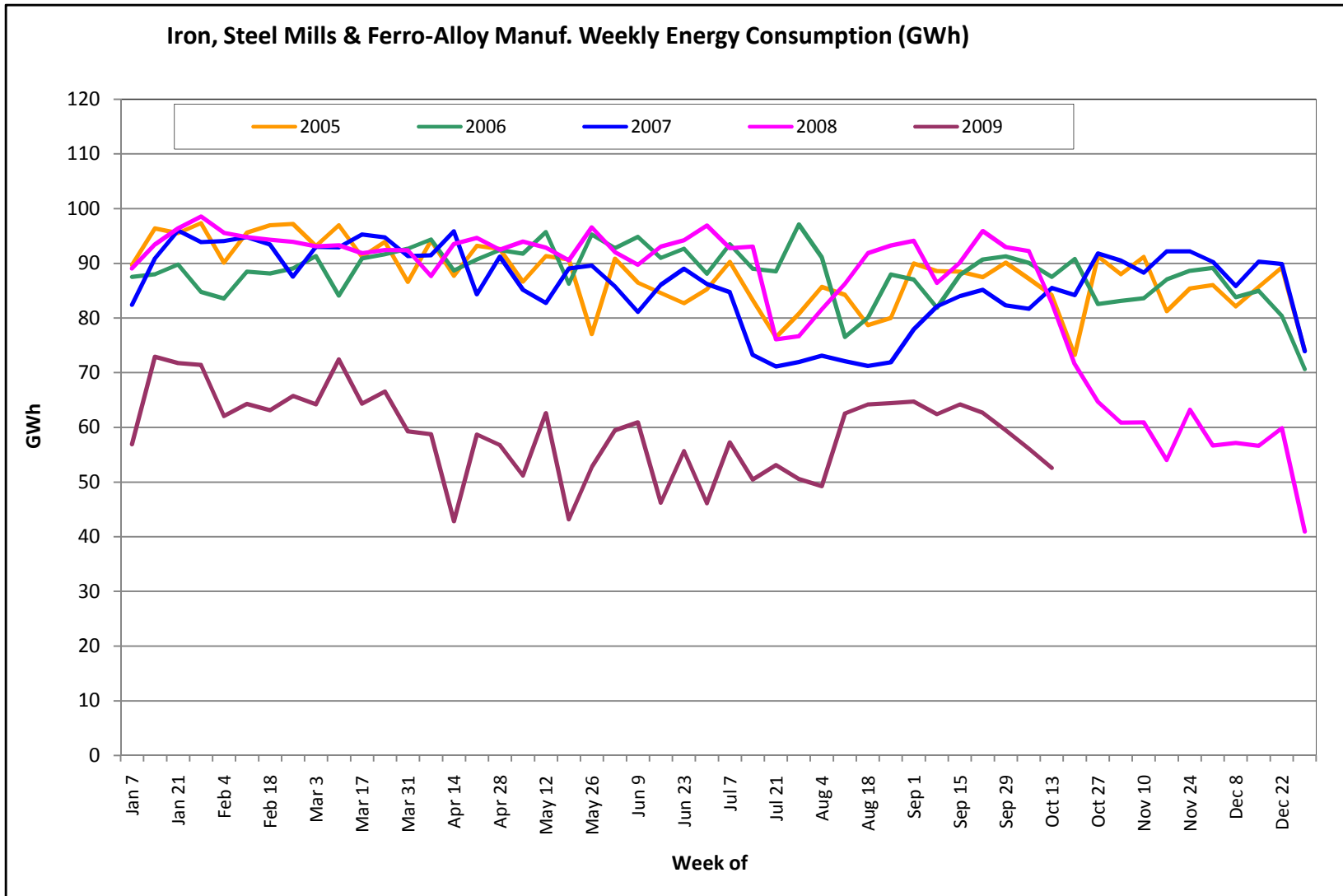
Pulp, Paper & Paperboard Weekly Energy Consumption (GWh)





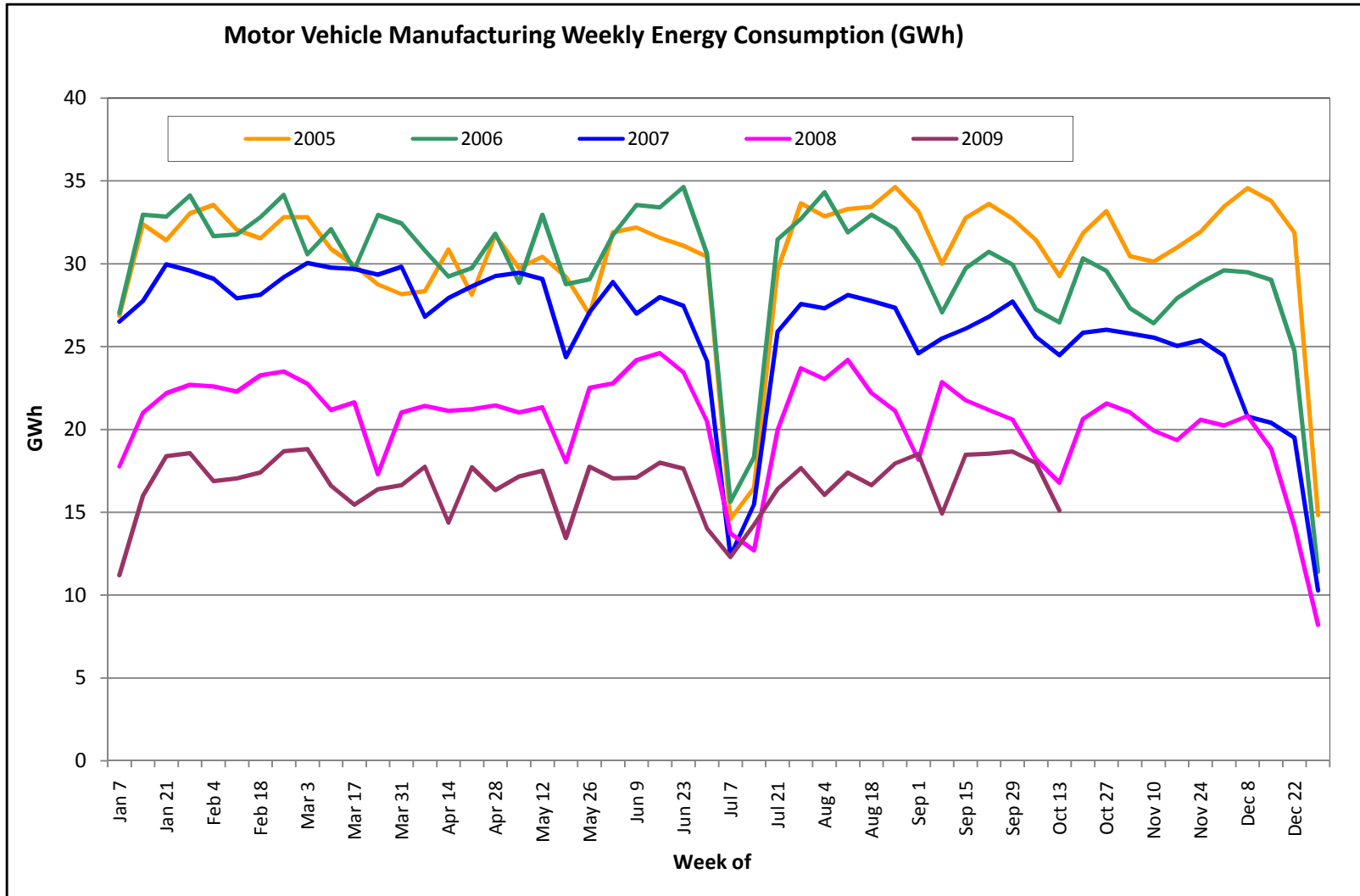
ieso
Power to Ontario.
On Demand.

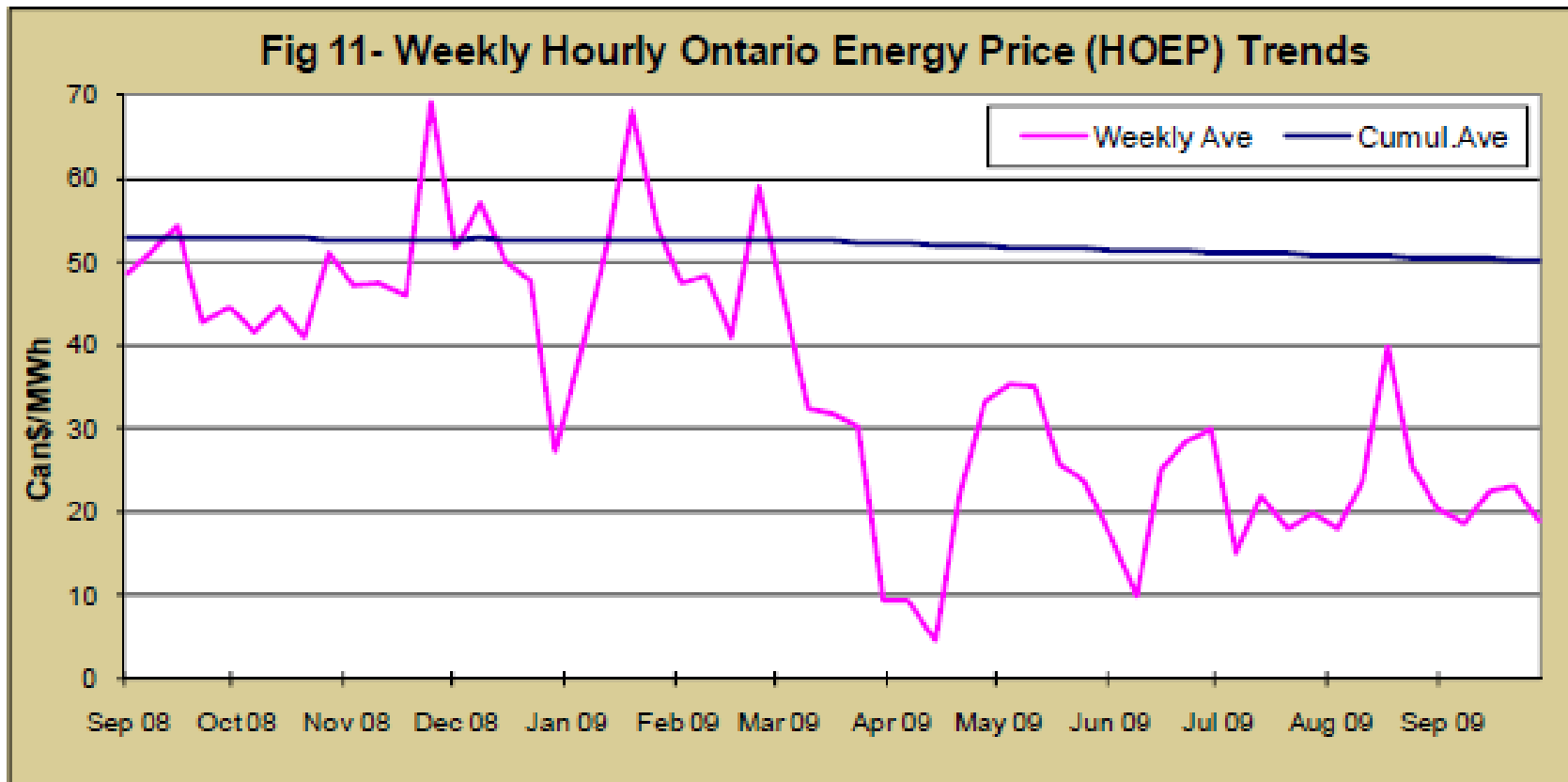




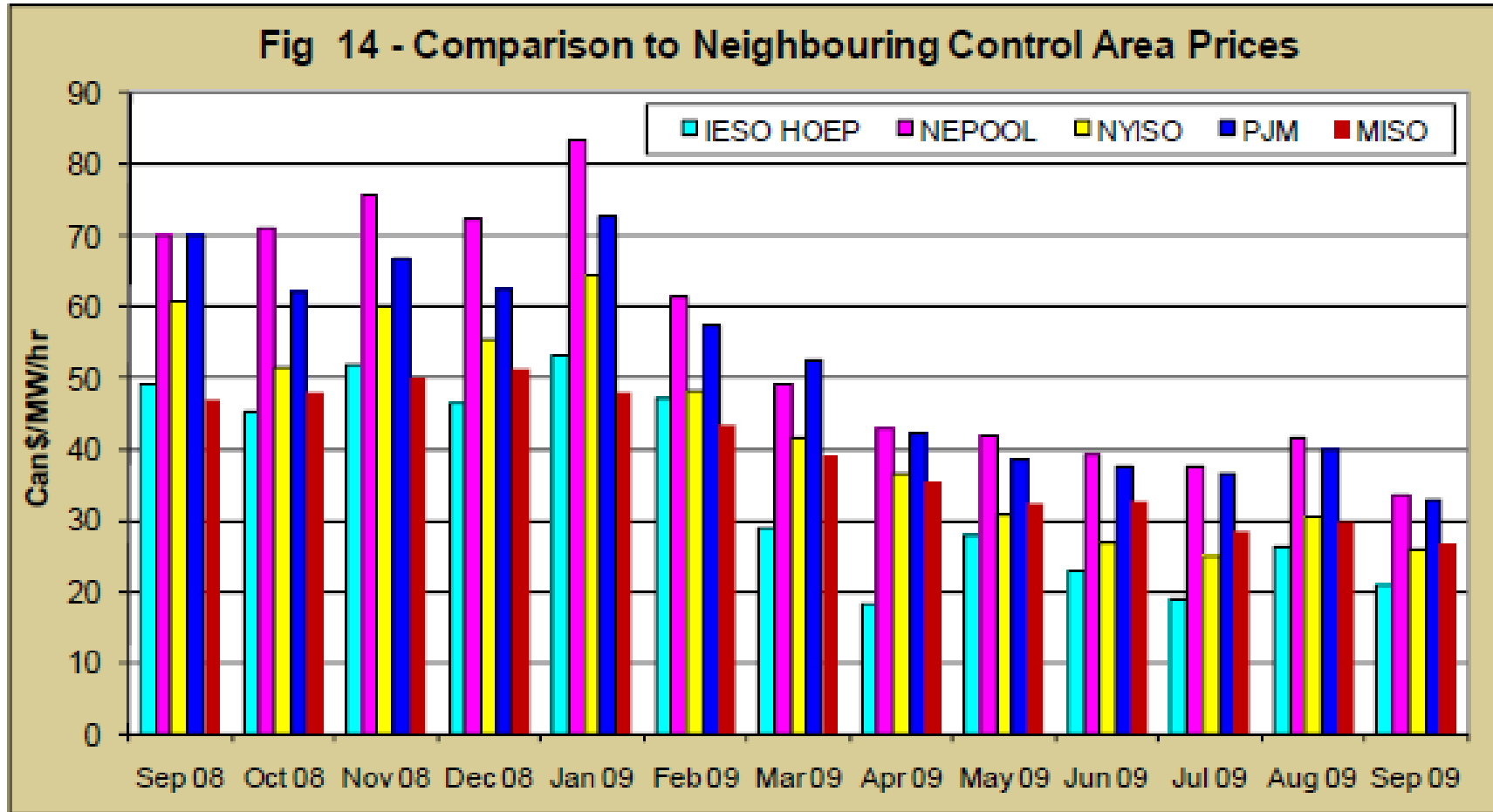


ieso
Power to Ontario.
On Demand.

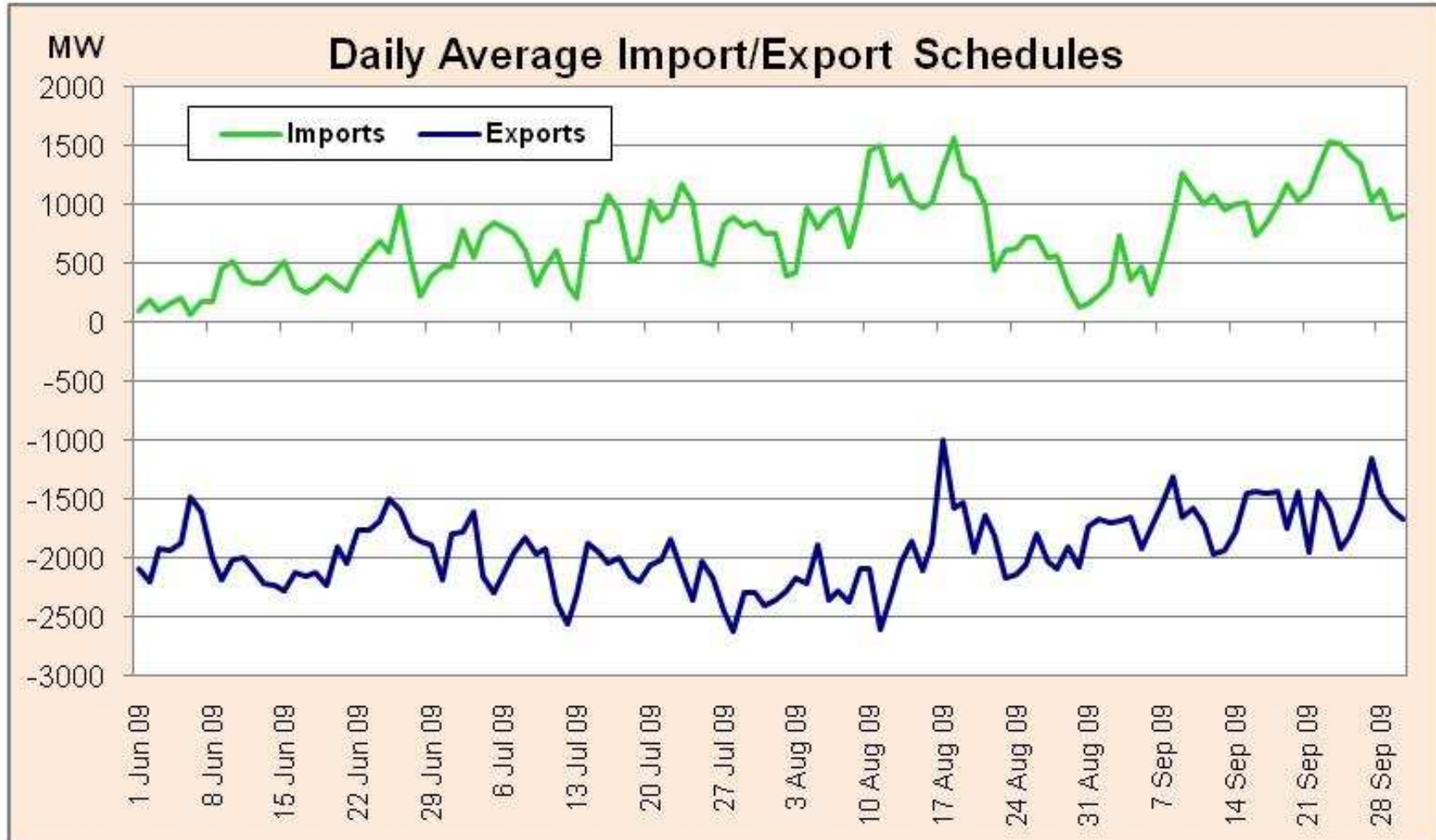




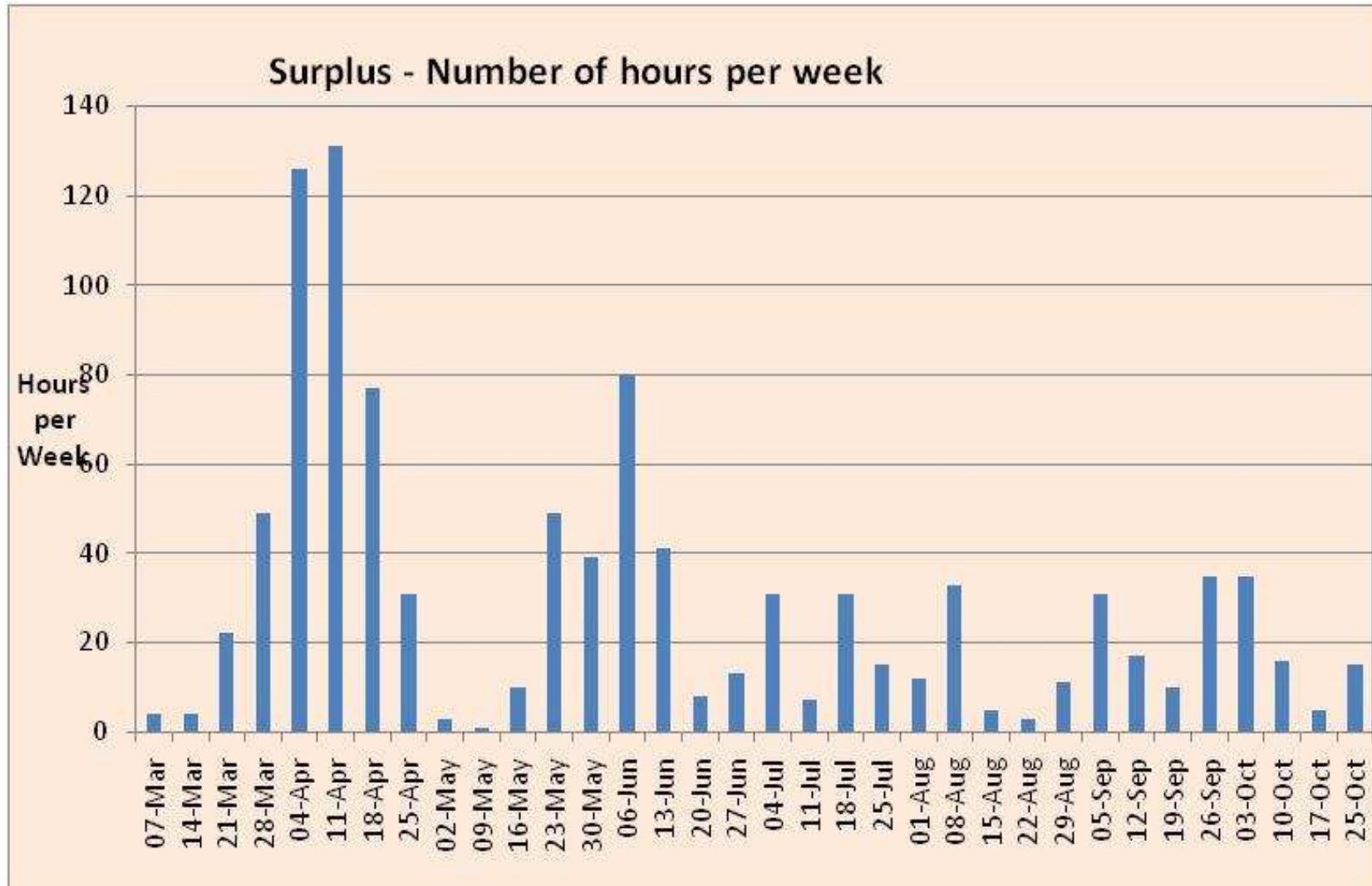
Prices In the Neighbourhood



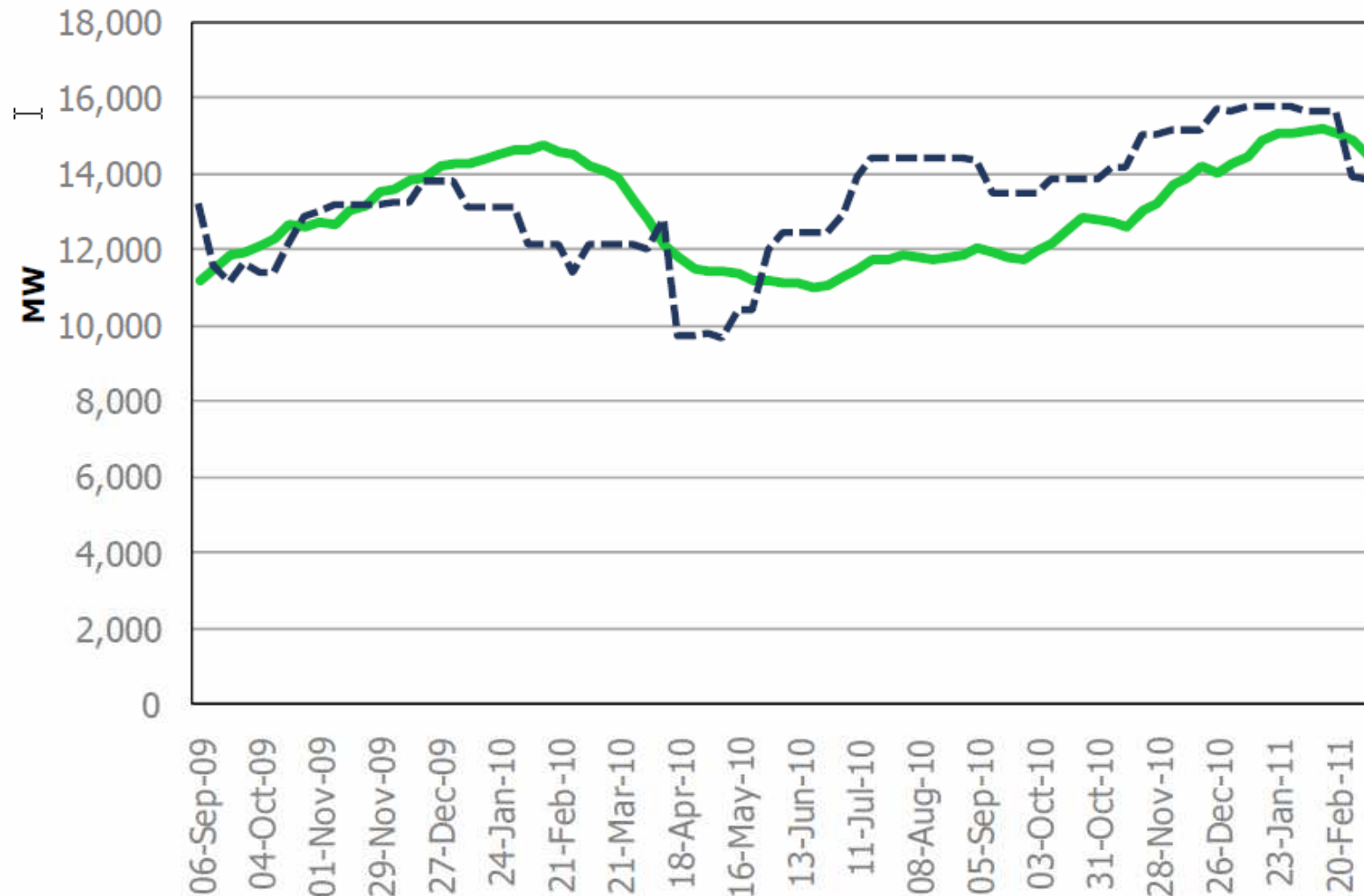
Import/Export Outcome



Surplus Baseload Generation



Here for at least a while



 Minimum Demand  Baseload Generation