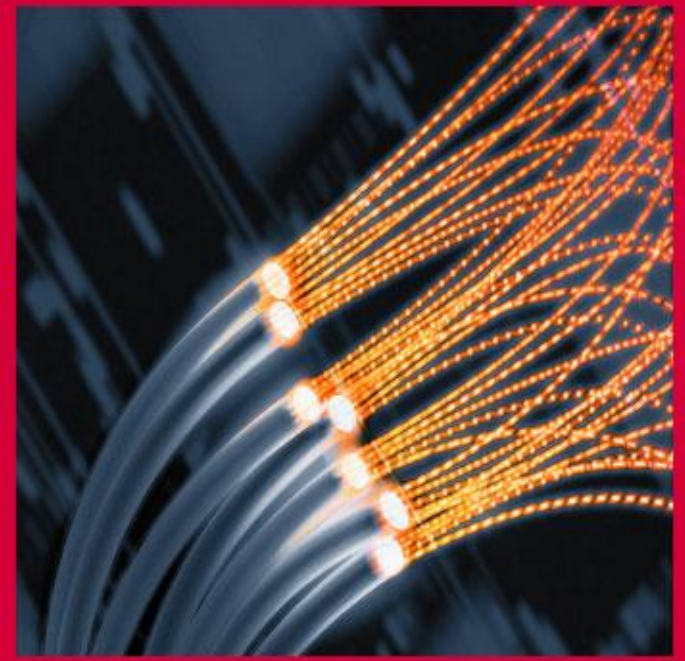
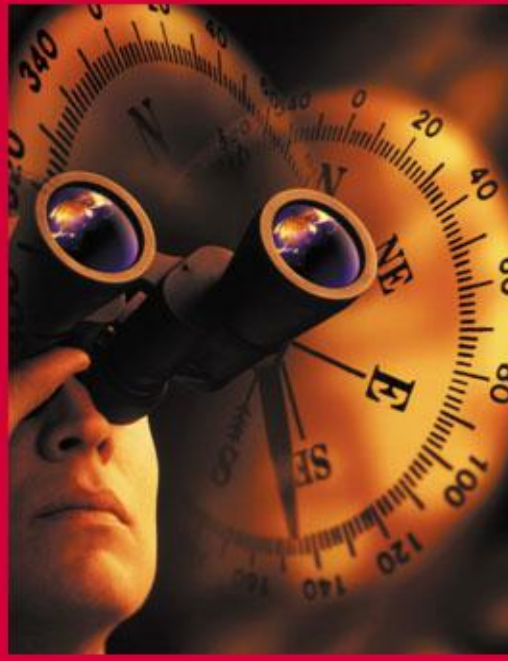
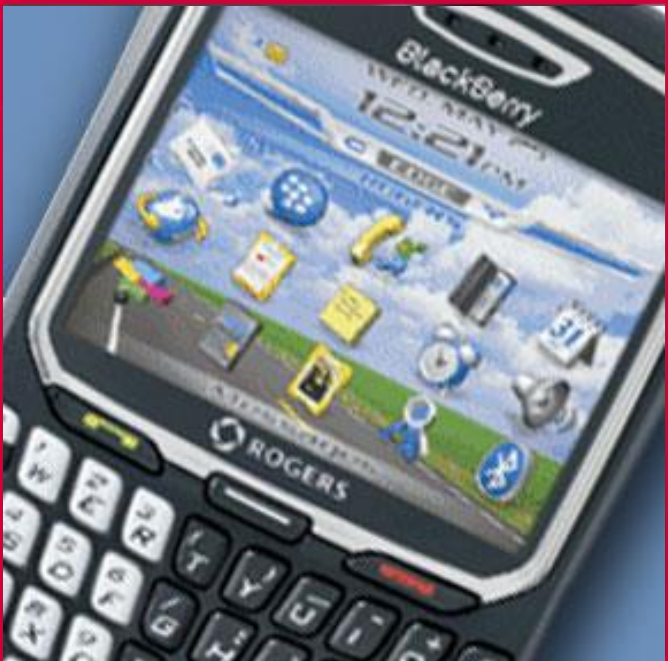




ROGERS™

**BUSINESS SOLUTIONS FROM ROGERS:
INNOVATING FOR THE FUTURE**



Rogers Overview - Corporate

U **ROGERS WIRELESS**

- ✓ 6.1 million subscribers
- ✓ 94% of Canadian population covered with GSM/GPRS/EDGE

U **ROGERS CABLE**

- ✓ 2.3 million basic cable subscribers; Canada's largest MSO
- ✓ 1.1 million broadband Internet subscribers

U **ROGERS MEDIA**

- ✓ 46 radio stations, 2 broadcast TV channels and 70 magazines
- ✓ Toronto Blue Jays MLB Club

U **ROGERS BUSINESS SOLUTIONS**

- ✓ 14,000 km national fibre network
- ✓ Full Solutions provider for the business market
- ✓ 20,000 Business Customers

- U **Rogers Business Solutions combines the innovative services of Rogers Cable, Rogers Wireless and Rogers Media in a single point of access to serve the needs of Canadian businesses**



Rogers Overview - Benefits of Choosing Rogers

U Only GSM carrier in Canada

- ✓ GSM-based platforms are utilized by 82% of the worlds wireless devices
- ✓ Extensive national coverage
 - ≈ More than 94% of Canadian population

U Provides HSDPA in the Golden Horseshoe Area

- ✓ Next generation high-speed wireless access
- ✓ Allows users to transmit both voice and data simultaneously
- ✓ Maintains backward compatibility GPRS/EDGE services

U Wide Range of Business Services

- ✓ National wireline & wireless data to enable
 - ≈ Field inspections
 - ≈ Fleet management
 - ≈ Wireless dispatch
 - ≈ Business continuity solutions

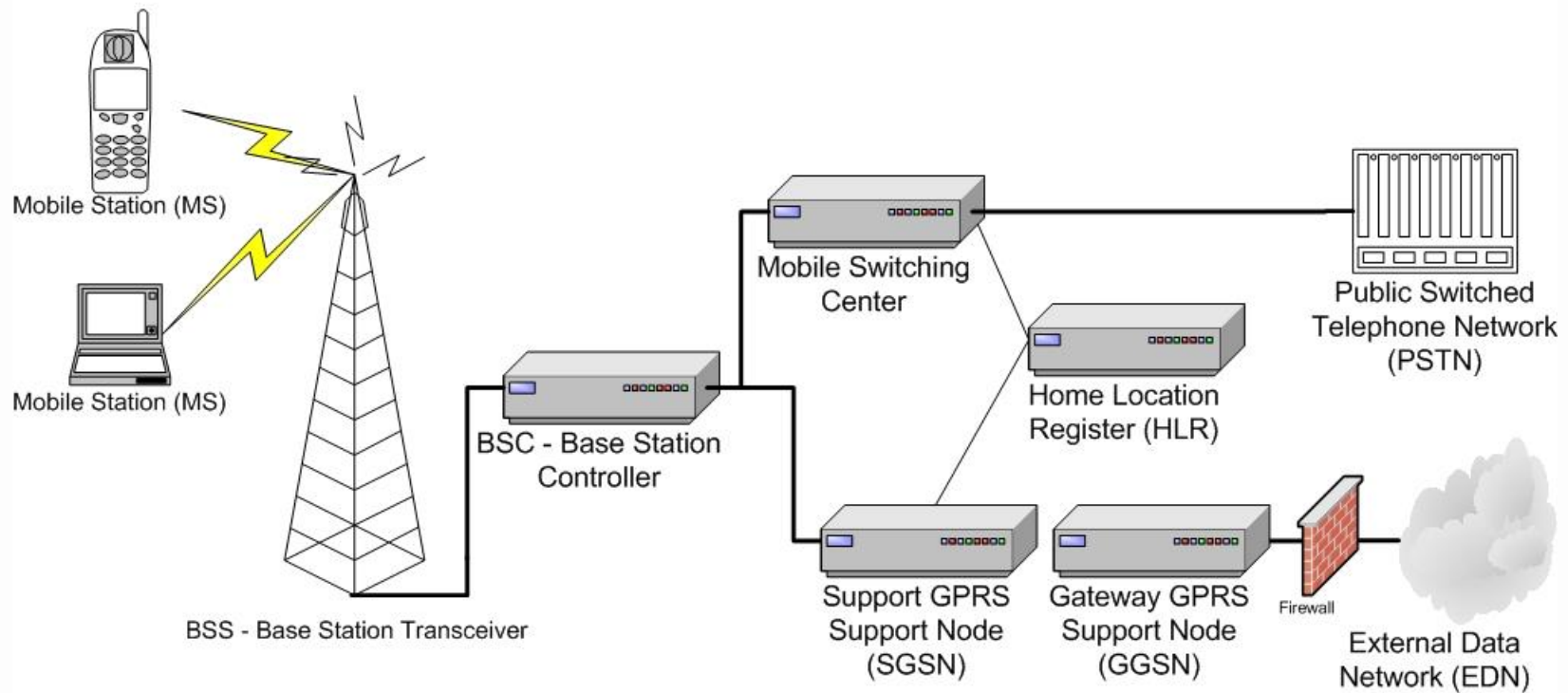
U Experience in providing Smart Metering Solutions

- ✓ 25,000 Smart meters deployed with Hydro One

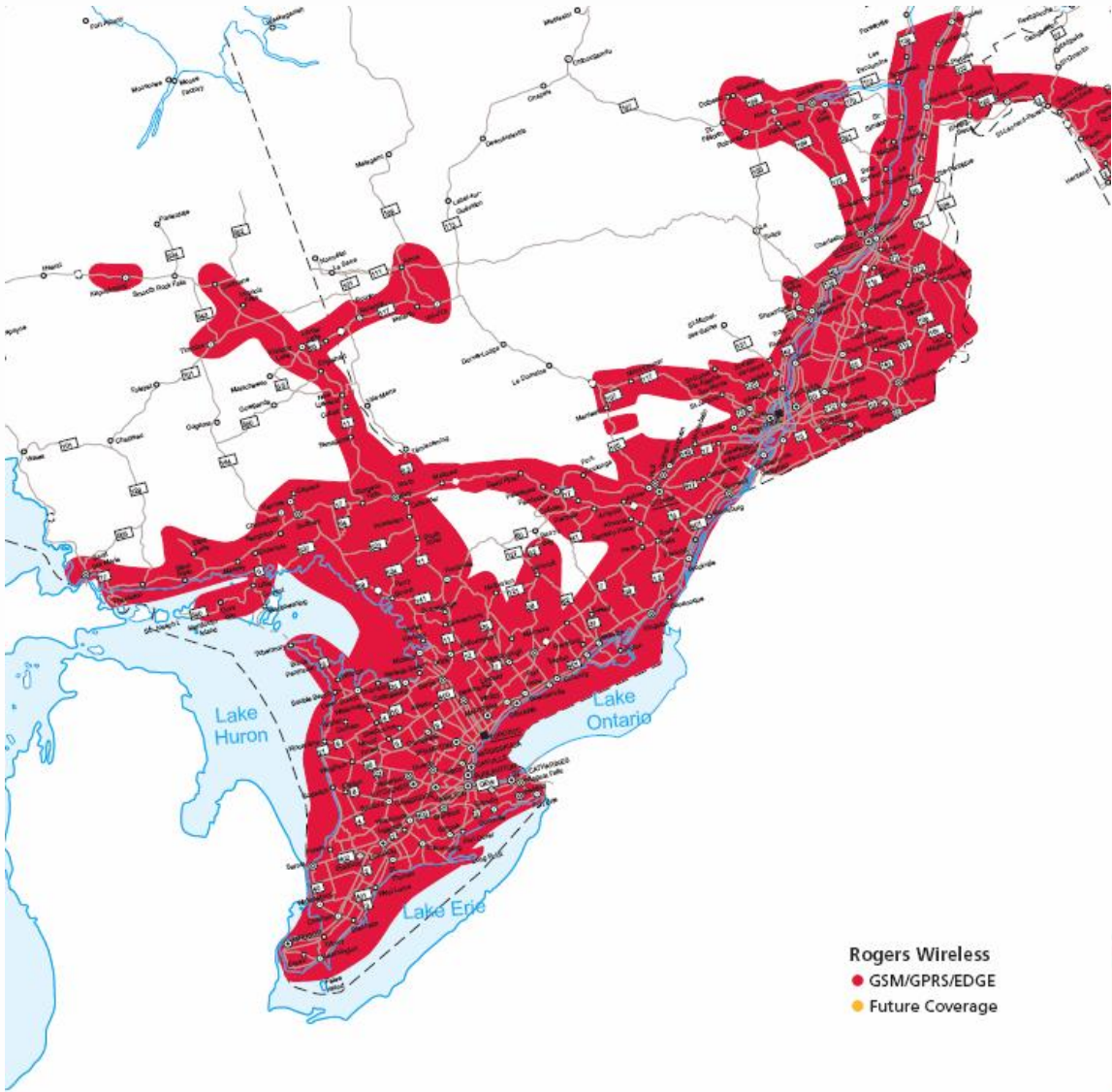


Rogers Overview - Wireless Network

Rogers GSM/GPRS/EDGE Infrastructure:



Rogers Coverage Area – Southern Ontario



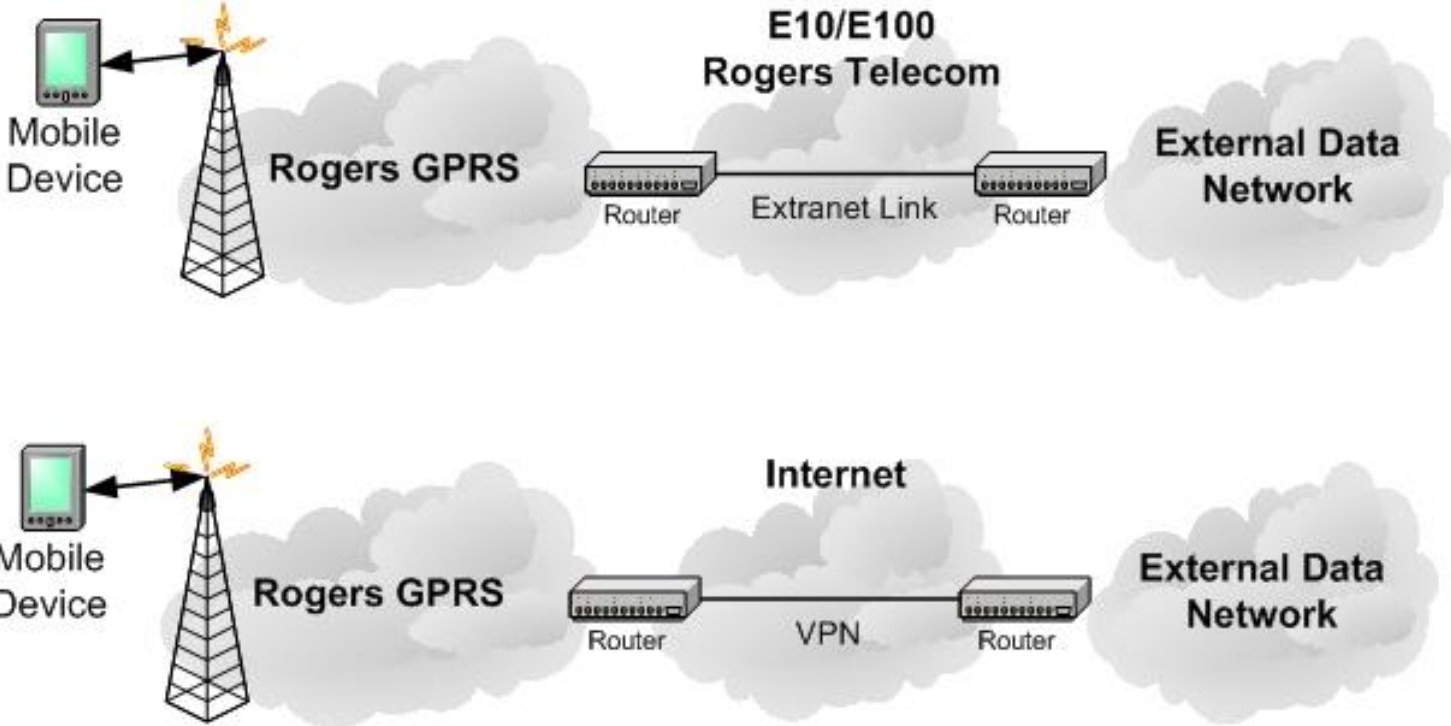
Smart Metering Solutions

- u Residential Smart Metering
 - v Collector meter deployments
 - v P2P meter deployments
- u Commercial and Industrial Smart Metering
 - v Interval meters
- u Wireless Private LAN Extension (WP-LANx) Service

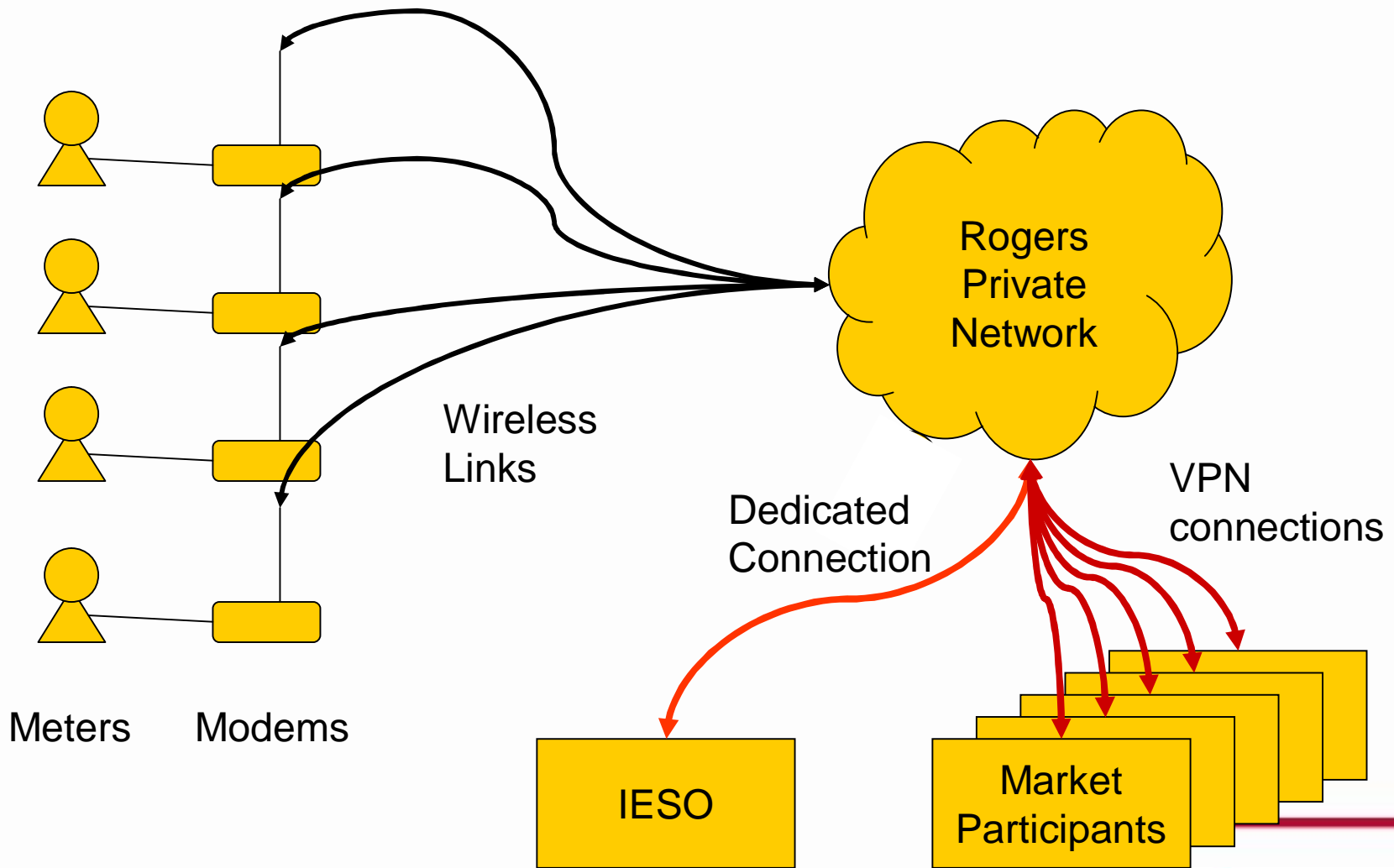
WP-LANx Service - Overview

- U Wireless Private LAN Extension (WP-LANx) Service**
 - ✓ Enables a Private Wireless Network
 - ✓ Provides a dedicated range of IP addresses specific to the customer
- U IP Addressing Options**
 - ✓ Static or dynamic IP addresses
- U Connectivity Options**
 - ✓ Dedicated vs. IP Sec VPN access
- U Redundancy Options**
- U Project Management**
 - ✓ Activation includes project management of network deployment
- U Support For Other Wireless Applications**
 - ✓ A single WP-LANx will support multiple applications
 - ≈ Workforce management & asset tracking
 - ≈ Residential Smart meters
 - ≈ Commercial & Industrial Smart meters
 - ≈ SCADA monitoring

WP-LANx Service – Access Options



WP-LANx Service – IESO Model



Additional Rogers Solutions

- u Wireless Communications
 - v Blackberries
 - v PCS phones
 - v Wireless Internet
 - v Wireless LAN access
- u Wireline Data solutions
 - v 10/100 Ethernet connections
 - v DSL & Cable connections
- u Workforce Management
 - v Field inspections
 - v Fleet management & asset tracking
 - v Wireless dispatch
 - v Business continuity solutions

Questions?

Contact:

Don Trynor

Product Manager, Metering Solutions

416-764-4519

